

Stock Market Spillovers via the Global Production Network: Transmission of U.S. Monetary Policy*

Julian di Giovanni

Federal Reserve Bank of New York
CEPR

Galina Hale

University of California Santa Cruz
Federal Reserve Bank of San Francisco
CEPR

November 16, 2021

Abstract

We quantify the role of global production linkages in explaining spillovers of U.S. monetary policy shocks to stock returns across countries and sectors using a newly constructed dataset. Our estimation strategy is based on a standard open-economy production network model that delivers a spillover pattern consistent with a spatial autoregression (SAR) process. We use the SAR model to decompose the overall impact of U.S. monetary policy on global stock returns into a direct and a network effect. We find that nearly 70% of the total impact of U.S. monetary policy shocks on country-sector stock returns are due to the network effect of global production linkages. Empirical counterfactuals show that shutting down global production linkages would reduce the total global impact of U.S. monetary policy shocks by half. Our results are robust to changes in the definitions of stock returns and monetary policy shocks, to controlling for correlates of the global financial cycle, foreign monetary policy shocks, and to alternative empirical specifications.

Keywords: Global production network, asset prices, monetary policy shocks, spillovers

JEL Codes: G15, F10, F36

*We are grateful to Ruth Cesar Heymann, Margaret Chen, Ted Liu and Youel Rojas for expert research assistance. We thank the authors of [Aquaro et al. \(2021\)](#) for sharing their Matlab code and Gianluca Benigno, Vasco Carvalho, Mick Devereux, Manuel Garcia-Santana, Rob Johnson, Andrei Levchenko, Isabelle Mejean, Damian Romero, Michael Weber, Shang-Jin Wei, and participants at the 2020 NBER Summer Institute's ITM program, 2020 Pacific Basin Conference at FRBSF, and seminars at the FRBNY, Norges Bank, and USC for helpful comments. Di Giovanni gratefully acknowledges the European Research Council (ERC) under the European Union's Horizon 2020 research and innovation programme (grant agreement No. 726168) and the Spanish Ministry of Economy and Competitiveness, through the Severo Ochoa Programme for Centres of Excellence in R&D (SEV-2015-0563) for financial support. The views expressed herein are those of the authors and not necessarily those of the Federal Reserve Banks of New York or San Francisco or any other person affiliated with the Federal Reserve System. E-mail (URL): juliandigiovanni@gmail.com (<http://julian.digiovanni.ca>), gbhale@ucsc.edu (<https://sites.google.com/view/galinahale/>). Supplemental material is available in an internet appendix, which can be found at http://julian.digiovanni.ca/Papers/diGiovanni_Hale_StockGlobalNetwork_InternetAppendix.pdf

1 Introduction

The recent era of globalization witnessed (i) stock market returns becoming more correlated across countries (Dutt and Mihov, 2013; Jach, 2017), and (ii) greater cross-country trade integration as firms’ production chains have spread across the world (Johnson and Noguera, 2017). While research has predominantly focused on how *financial* integration impacts the propagation of shocks across international financial markets and the resulting impact on asset prices (e.g., via a global financial cycle, Rey, 2013), *real* integration also influences these cross-border spillovers. In this paper, we show that the global production network plays an important role in the transmission of U.S. monetary policy shocks to world stock markets.

The conceptual framework delivers an empirical specification where the international shock transmission pattern follows a spatial autoregression (SAR) process. To conduct this analysis, we construct a novel dataset that combines production linkages information from the World Input-Output Database (WIOD, Timmer et al., 2015) with firm-level stock returns worldwide, which we aggregate to the country-sector level. We first exploit these data to document an unconditional positive correlation between the intensity of production linkages and stock market returns at the country-sector level. We then merge these data with U.S. monetary policy shocks and use a panel SAR to quantify the importance of the global production network in amplifying the transmission of U.S. monetary policy shocks to both domestic and foreign stock markets.

Our baseline SAR estimation shows that the bulk of the response of global stock returns to U.S. monetary policy shocks is due to global production linkages. Specifically, the average country-sector annualized U.S. dollar monthly stock return increases by 2.7 percentage points in response to a one percentage point expansionary surprise in the U.S. monetary policy rate, with approximately 70% of this stock return increase due to spillovers via global production linkages. This finding is robust to conditioning on other variables that may drive a common financial cycle across markets, such as the VIX, 2-year U.S. Treasury rate, and the broad U.S. dollar index. Our main result is also robust to different time periods, different definitions of stock returns and monetary policy shocks, and to controlling for monetary policy shocks in the U.K. and the euro area.

We build our conceptual framework based on a minimal assumptions, offering an open-economy extension to the work of Ozdagli and Weber (2017). The framework can also be derived using a static multi-country multi-sector production model that follows the standard closed-economy setup (e.g., Acemoglu et al., 2012; Herskovic, 2018; Richmond, 2019). Unlike many canonical macro-network models, our framework allows for firm profits, which in turn drive stock returns.¹ To generate monetary non-neutrality, we assume pre-set wages and allow for the possibility of money

¹For the purpose of our empirical work, we do not need to take a stand on the precise changes in the canonical model in order to generate profits. In particular, recent work in the literature has motivated firm profits by assuming constant returns to scale technology in a monopolistic competition setting (e.g., Bigio and La’O, 2020), or with decreasing returns to scale technology in a competitive market setting (e.g., Ozdagli and Weber, 2017).

to be introduced in different ways, for instance, via cash-in-advance constraints, as in many recent macro-network models (La’O and Tahbaz-Salehi, 2020; Ozdagli and Weber, 2017; Rubbo, 2020).²

This framework delivers the result that firms in all countries will be affected by a monetary shock in a given country. The relative magnitude of the shock’s impact is proportional to a firm’s production linkages with the rest of the world, which captures the importance of intermediate products in the firm’s production function. Standard models with technological shocks generally have shocks propagating downstream from supplier to customer via changes in marginal costs. Our framework differs in that it focuses on how shocks to monetary policy propagate upstream from customer to supplier given changes in customers’ demand induced by the monetary policy shock. This change in demand impacts firms profits and thus equity returns. We take the global input-output (IO) matrix as given, both in the model and in our empirical analysis. We view this assumption as realistic given that we are studying a short-run impact of a demand-side shock and the level of aggregation (country-sector) that we use in our empirical analysis. Robustness tests show that our empirical results are consistent with this assumption.

To conduct our regression analysis, we make use of the 2016 version of WIOD for input-output data and Thompson Reuters Eikon for stock market information. WIOD provides domestic and global input-output linkages for 56 sectors across 43 countries and the “rest of the world” aggregate annually for 2000–14. From Eikon we obtain firm-level stock prices, market capitalization, and firms’ sector classification. Using the market capitalization as a weight, we construct our own country-sector stock market indexes by aggregating firm-level information to the same industrial sector level as WIOD for 26 of the countries available in WIOD. The final merged dataset contains monthly country-sector stock returns and annual input-output matrices. Our baseline analysis uses the 30-minute window U.S. monetary policy shock measure calculated from Federal Funds futures data by Jarociński and Karadi (2020). Because of the global trade collapse in 2008–09 followed by the period of unconventional monetary policy, we limit our baseline analysis to 2000–07. However, our results are robust to other periods.

Before turning to examining the impact of U.S. monetary policy shocks, we use the raw stock market and input-output data to show that country-sector cells that are more closely connected in the global production network also have more correlated stock returns. This observation remains true even if we exclude same-country cross-sector correlations from the analysis. This empirical regularity suggests that international input-output linkages may provide an important channel of shock transmission across global stock markets.

The theoretical framework delivers a SAR structure for our empirical analysis (LeSage and Pace, 2009), where spatial distance is represented by the coefficients in the global IO matrix. The

²In this framework without dynamics or investments we are abstracting from other channels of monetary policy transmission summarized in Ozdagli and Velikov (2020).

SAR specification we use is different from a standard one in two ways. First, in addition to a spatial dimension (country-sector in our case), we have a time dimension.³ Thus, we have a *panel* spatial autoregression. Second, we estimate country-sector specific coefficients, which is possible thanks to the time dimension in our panel setting. We estimate this heterogeneous-coefficient panel SAR model using the maximum likelihood methodology in [Aquaro et al. \(2021\)](#), and approximate standard errors using a wild bootstrap procedure.

We find that production networks play a crucial role in transmitting U.S. monetary policy shocks across global stock returns. This finding is consistent with the [Acemoglu et al. \(2016\)](#) study that shows that the network-based shock propagation can be larger than a direct effect, as well as being similar to what [Ozdagli and Weber \(2017\)](#) find for the response of U.S. stock returns to U.S. monetary policy shocks. Both of these studies focus only on the U.S. in a closed-economy setting, while ours incorporates global production linkages. By separating the estimates for U.S. sectors from those of foreign sectors, we show that foreign stock returns respond to U.S. monetary policy shocks primarily through the network of customer-supplier linkages. Similar to the finding of [Ozdagli and Weber \(2017\)](#), the network impact of U.S. monetary policy shock on U.S. returns plays a greater role than the direct impact. Computing empirical counterfactuals, we show that shutting down global production linkages would reduce the total impact of U.S. monetary policy shocks on global stock returns by half.

Our results are robust. They are not sensitive to the choice of a specific time period or the year in which the IO matrix is sampled. This result suggests very limited, if any, endogenous response of global supply chains to U.S. monetary policy shocks and thus justifies the assumption of an exogenous trade structure in our theoretical framework. We further show that our results are robust to replacing nominal U.S. dollar stock returns with excess returns, stock returns expressed in local currency, and with real stock returns. Our results are also robust to using other definitions of monetary policy shocks, and to controlling for monetary policy shocks in the U.K. and the euro area. We find that there are no individual countries or sectors in which the spillover effects are concentrated. Further, we are able to rule out that the heterogeneity of estimates across countries and sectors is explained by alternative transmission channels. We also present a placebo analysis to rule out spurious effects that may be present given the recursive nature of the SAR model. Finally, our results are robust to conditioning stock returns on global financial cycle correlates: (i) VIX, (ii) 2-year U.S. Treasury rate, and (iii) broad U.S. dollar index.

There is a large literature in international macroeconomics that studies the transmission of shocks and business cycle comovement. We provide novel evidence on the spillovers of monetary

³Because input-output coefficients do not change much over time, we use a static, beginning-of-period IO matrix. We are implicitly assuming that market participants react on the intensive margin of production networks, rather than to the expected changes in production linkages. This assumption is arguably more justifiable at the sector than the firm level. However, trade patterns have changed over time, so we also experiment by varying the weighting matrix for different time periods in our empirical analysis and find that results are not sensitive to these changes.

shocks and the role of production networks as a conduit for this transmission by analyzing assets return responses at the country-sector level. This approach differs from the majority of the literature that focuses on output comovements, and has the advantage that asset returns are observable at a higher frequency than national accounts data, and therefore are more likely to identify reactions to monetary policy shocks. We also differ from the international real business cycle literature that typically studies the transmission of real shocks via trade linkages by examining the impact of nominal shocks. For example, [Burstein et al. \(2008\)](#), [Bems et al. \(2010\)](#), [Johnson \(2014\)](#), and [Eaton et al. \(2016\)](#), [Auer et al. \(2019\)](#), among others, model and quantify international shock transmission through input trade. [Baqae and Farhi \(2019b\)](#) and [Huo et al. \(2020\)](#) develop theoretical and quantitative treatments of the international input network model. [Boehm et al. \(2019\)](#) and [Carvalho et al. \(2021\)](#) use a case study of the Tōhoku earthquake to provide evidence of real shock transmission through global and domestic supply chains, while [di Giovanni et al. \(2018\)](#) show the importance of firms’ international trade linkages in driving cross-country GDP comovement. None of these studies focus on the transmission of monetary policy shocks, nor stock markets’ comovement.

Our paper also contributes to broader literature on international spillovers of U.S. monetary policy by documenting and quantifying the importance of real linkages. [Wongswan \(2006\)](#); [Ehrmann and Fratzscher \(2009\)](#); [Ammer et al. \(2010\)](#); [Miranda-Agrippino and Rey \(2020\)](#), among many others, provide evidence which shows that U.S. monetary policy shocks induce comovements in international asset returns. Most analysis of the spillover channels focuses on bank lending and, more generally, global bank activity – see, among others, [Cetorelli and Goldberg \(2012\)](#); [Bruno and Shin \(2015b\)](#); [Buch et al. \(2019\)](#) and a survey by [Claessens \(2017\)](#). Another large group of papers study the impact of U.S monetary policy on international capital flows – see, among others, [Forbes and Warnock \(2012\)](#); [Bruno and Shin \(2015a\)](#); [Avdjiev and Hale \(2019\)](#).

Much less attention has been devoted to cross-border monetary policy spillovers through real channels, such as input-output linkages. [Bräuning and Sheremirov \(2019\)](#) study the transmission of U.S. monetary policy shocks on countries’ output via financial and trade linkages, and [Chang et al. \(2020\)](#) study how the transmission of shocks via countries trade linkages impacts asset prices using information from the sovereign CDS market. The latter two papers differ from our work in that they focus on total bilateral trade linkages, and thus cannot measure transmission via international production linkages.^{4,5}

There is also a growing literature that shows how real linkages across sectors play an important role in domestic shock transmission (see, among others, [Foerster et al., 2011](#); [Acemoglu et al., 2012](#);

⁴In particular, these trade flows include trade in both final consumption and intermediate goods, and are measured in gross output and not value added, which implies potential overstating trade linkages. Further, gross output trade need not be strongly correlated with intermediates trade. These are well-known problems, and are discussed in [Johnson and Noguera \(2017\)](#), among others.

⁵Other papers that study how trade globalization affects asset prices include [Brooks and Del Negro \(2006\)](#) and [Barrot et al. \(2019\)](#).

Atalay, 2017; Grassi, 2017; Baqaee and Farhi, 2019a). Pasten et al. (2017) study the transmission of monetary policy in a production economy, while recent theoretical work on optimal monetary policy has examined the impact of input-output linkages in setting policy in a closed economy (La’O and Tahbaz-Salehi, 2020; Rubbo, 2020), as well as a small open-economy setting (Wei and Xie, 2020). Ozdagli and Weber (2017), to which our paper is most closely related, shows that input-output linkages are quantitatively important for monetary policy transmission to stock returns in the United States,⁶ while Herskovic (2018) and Richmond (2019) nest input-output structures into standard asset pricing models.

Finally, our paper contributes to a strand of international finance literature that focuses on the relative importance of country and sector characteristics in international asset pricing (see, for instance, Griffin and Stulz, 2001; Bekaert et al., 2009; Lewis, 2011). Our results highlight that the size and location of country-sector production linkages are key characteristics to consider for better understanding the cross-section response of global asset prices to monetary policy shocks.

We bridge these different strands of the literature by showing the importance of real linkages in the international transmission of monetary policy shocks across asset markets. Our main contribution is to show, on a global scale, the importance of the intermediate trade channel in transmitting U.S. monetary policy shocks across asset markets, and providing a quantitative estimate of its contribution as well as transmission pattern on asset prices. That is, we show how U.S. monetary policy directly impacts domestic stock returns and spills over to the rest of the world via the global production network.

We present a stylized conceptual framework of global production model cross-country monetary policy shock transmission in Section 2, which motivates the empirical model outlined in Section 3. We then describe our data in Section 4, before presenting our empirical results in Section 5. Section 6 concludes.

2 Conceptual Framework

This section provides a conceptual framework to motivate our estimation strategy for studying the transmission of U.S. monetary policy shocks to stock returns internationally via production linkages. There are three main ingredients required to produce such shock transmission: first, to have predictions for stock returns, a firm’s production technology or the economy’s market structure must allow for positive profits in equilibrium; second, shocks in one country can be transmitted to firms (and their profits) in other countries; third, monetary shocks must have real effects. A wide variety of theoretical frameworks can deliver each of these ingredients and they can be readily combined into a simple static multi-country multi-sector input-output model, which allows for

⁶Moreover, Alfaro et al. (2020) and Bigio and La’O (2020) show the importance of production linkages in transmitting sectoral shocks to the aggregate economy.

monetary policy to have an impact on the real economy. Internet Appendix IA1 presents a simple multi-country multi-sector production model, which embeds cash-in-advance constraints and sticky wages.

Technology and Market Structure

To model international dependence at the sector level, we introduce international trade in intermediate goods. To fix notation, assume that the world economy is comprised of N countries and J sectors. Countries are denoted by m and n , and sectors by i and j . The notation follows the convention that for trade between any two country-sectors, the first two subscripts always denote exporting (source) country-sector, and the second subscript the importing (destination) country-sector – i.e., $x_{mi,nj}$ denotes goods produced in country m sector i that are used as intermediate inputs by sector j in country n .

A firm in a given sector produces using labor and a set of intermediates goods, which are potentially sourced from all countries and sectors, including its own. Output for a firm in country-sector nj , y_{nj} , can then be written as

$$y_{nj} = z_{nj} F_{nj}(l_{nj}, \{x_{mi,nj}\}), \quad (1)$$

where l_{nj} is labor used by firms in sector nj , $\{x_{mi,nj}\}$ is the set representing quantities of intermediate goods used, z_{nj} is a Hicks-neutral technology parameter. $F_{nj}(\cdot)$ may allow for constant returns to scale (CRS) or decreasing returns to scale (DRS) production. Note that we have assumed a representative firm in each country-sector and thus have dropped any firm-specific notation.

Market Clearing

We can express the goods market clearing conditions for every country-sector mi in terms of expenditures, $R_{mi} = p_{mi}y_{mi}$, as

$$R_{mi} = \underbrace{C_{mi}}_{\substack{\text{Final goods} \\ \text{expenditure on } mi \\ \text{across } N \text{ countries}}} + \underbrace{\sum_{j=1}^J \sum_{n=1}^N \omega_{mi,nj} R_{nj}}_{\substack{\text{Intermediate input} \\ \text{expenditure}}}, \quad (2)$$

where p_{mi} is the price received by producers of good mi per unit of output. This condition is standard and will hold regardless of the underlying economic model. The first term of (2) captures expenditures on goods produced by country-sector mi that are used for final consumption both domestically and abroad. This term can be expressed as a function of underlying parameters of a model, such as households' preferences and their share of income. However, since we ultimately link movements in final goods' expenditure to exogenous changes in monetary policy, we omit

these details to avoid introducing unneeded notation.⁷ The second term of the equation captures expenditure on intermediate inputs, where $\omega_{mi,nj}$ is the input-output coefficient for country-sector nj purchases of the intermediate good from country-sector mi needed to produce a unit of output of good nj :

$$\omega_{mi,nj} = \frac{p_{mi,n}x_{mi,nj}}{p_{nj}y_{nj}},$$

and we assume that the law of one price holds across goods in a given sector i , such that $p_{mi,n} = p_{mi}$.⁸ Further, as we are working with a cross-country expenditure system, all prices should be expressed in a common currency. We set the currency to be the U.S. dollar, and take this currency choice into account by transforming all countries stock returns to U.S. dollar returns in our empirical work below.

Stacking (2) over country-sector cells, we can express the global expenditure system in matrix form:

$$\mathbf{R} = \mathbf{C} + \mathbf{\Omega}\mathbf{R}, \quad (3)$$

where \mathbf{R} is the $NJ \times 1$ vector of country-sector sales, \mathbf{C} captures the $NJ \times 1$ vector of final goods' expenditures, and $\mathbf{\Omega}$ is the $NJ \times NJ$ global input-output matrix. Note that this expenditure system holds regardless of the underlying economic model, and is measured in the data by national accounting and world input-output data.

Deviations from Steady-State and Stock Returns

We are ultimately interested in studying how monetary policy shocks impact stock returns given the world input-output network, and study deviations from a steady-state. First, re-arranging (3), we express revenues as a function of final goods expenditures:

$$\mathbf{R} = (\mathbf{I} - \mathbf{\Omega})^{-1}\mathbf{C}, \quad (4)$$

where $(\mathbf{I} - \mathbf{\Omega})^{-1}$ is the $NJ \times NJ$ Leontief inverse of the input-output matrix. Second, for any variable x , define the log deviation from steady-state $\hat{x} = \log(x) - \log(\bar{x})$ so that $x = \bar{x} \exp(\hat{x}) \approx \bar{x}(1 + \hat{x})$, where \bar{x} is the steady-state value of x . Then, holding $\mathbf{\Omega}$ fixed,⁹ we can express (4) in terms of deviations from steady-state as

$$\hat{\mathbf{R}} = (\mathbf{I} - \mathbf{\Omega})^{-1}\phi_R \circ \hat{\mathbf{C}}, \quad (5)$$

⁷Internet Appendix IA1 provides a model that yields a structure akin to (2), and demonstrates how changes in modeling assumptions will impact the derivation of the expenditure system.

⁸The model allows for iceberg trade costs across countries. These costs are not crucial for the derivation of the model nor for econometric estimation, and we thus assume that they are set to zero for the remainder of the paper to keep notation to a minimum.

⁹Holding $\mathbf{\Omega}$ fixed implicitly assumes Cobb-Douglas production. However, given the static nature of the model and how our empirical estimation strategy, this assumption is not strong and the same results will follow for a more general CES production structure.

where \circ represents the Hadamard product, and ϕ_R is the $NJ \times 1$ vector containing the steady-state consumption-to-revenue ratio in each country-sector: $\phi_R = \left(\frac{\bar{C}_{11}}{R_{11}}, \dots, \frac{\bar{C}_{NJ}}{R_{NJ}} \right)'$.

We need to either deviate from perfect competition or from firm CRS production technology in order to generate positive profits in equilibrium. One standard setup in the macro-networks literature allows for CRS technology under monopolistic competition, where firms produce unique varieties and set prices with a constant mark-ups (e.g., [Bigio and La'O, 2020](#)). Alternatively, one can assume that firms produce with DRS in a competitive market structure as in [Ozdagli and Weber \(2017\)](#).

To a first-order, changes in firm profits are proportional to changes in firm revenues around the steady-state: $\hat{\pi}_{nj} \approx \hat{R}_{nj}$. In particular, in a monopolistic competitive market where firms have CRS technology, or in a competitive equilibrium where firms have DRS technology, profits will be a constant multiple of revenues, where the constant is a function of underlying model parameters. To ease notation, we assume that firm profits change one-for-one with firm revenues, so that [Equation \(5\)](#) yields

$$\hat{\pi} = (I - \Omega)^{-1} \phi_{\pi} \circ \hat{\mathcal{C}}, \quad (6)$$

where π is a $NJ \times 1$ vector of nj profits, and ϕ_{π} is the $NJ \times 1$ vector containing the steady-state consumption-to-profit ratio in each country-sector: $\phi_{\pi} = \left(\frac{\bar{C}_{11}}{\bar{\pi}_{11}}, \dots, \frac{\bar{C}_{NJ}}{\bar{\pi}_{NJ}} \right)'$.

In the above framework, domestic households are assumed to fully own domestic firms and thus have claim to all profits. If we explicitly account for equity ownership, and abstract from any uncertainty or financial market frictions, innovations to firms' profits pass one-for-one into domestic stock returns. Specifically, denoting the stock price for a firm in country-sector nj as q_{nj} , then the stock return around steady-state is \hat{q}_{nj} , which is identical to the change in profits around the steady state: $\hat{q}_{nj} = \hat{\pi}_{nj}$, or in vector-form across all country-sector cells: $\hat{q} = \hat{\pi}$, where \hat{q} is the $NJ \times 1$ vector $(\hat{q}_{11}, \dots, \hat{q}_{NJ})'$. Therefore, following [Equation \(6\)](#), demand shocks will propagate across country-sectors' stock returns via the global production network:

$$\hat{q} = (I - \Omega)^{-1} \phi_{\pi} \circ \hat{\mathcal{C}}. \quad (7)$$

Monetary Policy Shocks

The real effect of monetary policy has been subject to extensive analysis (see, for example [Woodford, 2004](#); [Gali, 2015](#), for textbook treatments). To generate a real effect, some form of price rigidity is built into the model.¹⁰ In the case of a multi-country framework, assuming wage rigidity across countries helps simplify the model solution. Money can then be introduced into the model via different channels, such as cash-in-advance constraints, money in the utility function, or interest

¹⁰[Gorodnichenko and Weber \(2016\)](#) show that price rigidities are an important determinant of the extent to which stock returns respond to monetary policy shocks.

rate rules. Such models will predict that deviations in expenditures on final consumption \mathcal{C} in country n around its steady-state are proportional to the monetary policy shock in country n , $\widehat{\mathcal{M}}_n$:

$$\widehat{\mathcal{C}}_n = \phi_n \widehat{\mathcal{M}}_n, \quad (8)$$

where $\phi_n \geq 0$ depends on steady-state values and the elasticity of consumption growth with respect to changes in monetary policy.¹¹ Or, if we allow for heterogeneity in sector-level consumption, \mathcal{C}_{nj} , responses, we can write (8) at the country-sector level as

$$\widehat{\mathcal{C}}_{nj} = \phi_{nj} \widehat{\mathcal{M}}_n, \quad (9)$$

where $\phi_{nj} \geq 0$ differs from ϕ_n given households' consumption preferences for country-sector goods.

Writing (9) for NJ country-sector cells in vector form, and combining it with (7), we express stock returns as a function of monetary policy shocks:

$$\widehat{\mathbf{q}} = (\mathbf{I} - \boldsymbol{\Omega})^{-1} \boldsymbol{\beta} \widehat{\mathcal{M}}, \quad (10)$$

where $\boldsymbol{\beta}$ is a $NJ \times N$ matrix that combines the elements of the vector $\boldsymbol{\phi}_\pi$ and the elements of the $NJ \times 1$ vector of elements $\{\phi_{nj}\}$, and $\widehat{\mathcal{M}}$ is $N \times 1$ vector of countries' monetary policy shocks.

Considering only shocks to U.S. monetary policy, the element \mathcal{M}_{US} , Equation (10) gives

$$\widehat{\mathbf{q}} = (\mathbf{I} - \boldsymbol{\Omega})^{-1} \boldsymbol{\beta}_{US} \widehat{\mathcal{M}}_{US}, \quad (11)$$

where $\boldsymbol{\beta}_{US}$ is a $NJ \times 1$ sub-matrix of $\boldsymbol{\beta}$ containing U.S.-specific elements. We present a simple model in Internet Appendix IA1, which embeds cash-in-advance constraints in an open-economy input-output model to arrive at equations (10) and (11).

Risk and Asset Pricing

The above framework does not account for uncertainty. In particular, we have not taken a stand on households' risk aversion nor their intertemporal consumption decisions. Doing so opens the door to other potential impacts of monetary policy shocks on country-sectors' equity returns, besides the transmission of demand shocks via global production linkages. A key channel of monetary policy effect to consider is its impact on the stochastic discount factor (SDF) and risk-taking behavior; thus the pricing of firms' payouts (profits in our framework) by investors.

In the international context, movements in investors' risk-taking behavior lie at the heart of the impact of U.S. monetary policy on cross-country asset returns via the global financial cycle (Bruno and Shin, 2015a; Miranda-Agrippino and Rey, 2020). While it is beyond the scope of

¹¹In the cash-in-advance model presented in Internet Appendix IA1, changes in the money supply map one-to-one to changes in consumption, so that $\phi_n = 1$.

this paper to formally introduce portfolio decisions into our conceptual framework,¹² our empirical setup must still control for other variables that are correlated with U.S. monetary policy shocks and that may impact the pricing of firms’ profits via changes in the SDF. In particular, changes in the variables that affect the SDF, such as changes in global risk aversion, may impact equity returns regardless of the production linkages. To obtain an unbiased estimate of the “demand channel” impact of monetary policy shocks on equity returns highlighted in our conceptual framework, we must therefore control for movements in SDF covariates that may be correlated with monetary policy shocks.

3 Regression Framework

The previous section’s framework predicts that a monetary policy shock affects all stock returns in the amount proportional to their input-output distance from the source of the shock. The empirical counterpart to this propagation pattern is a spatial autoregression (LeSage and Pace, 2009).

Specifically, holding the parameters of the model (β and Ω) fixed, the empirical counterpart of Equation (11) for a given country-sector observation is

$$\hat{\mathbf{q}}_t = (I - \text{diag}(\boldsymbol{\rho}) \mathbf{W})^{-1} \beta \widehat{\mathcal{M}}_{US,t}, \quad (12)$$

where $\hat{\mathbf{q}}_t$ is a $NJ \times 1$ vector of stock returns $\hat{q}_{mi,t}$ for each t .¹³ The subscript t represents the year-month in which a U.S. monetary policy shock occurs,¹⁴ I is a $NJ \times NJ$ identity matrix, \mathbf{W} is the $NJ \times NJ$ empirical global input-output matrix, and $\widehat{\mathcal{M}}_{US,t}$ is the U.S. monetary policy shock at time t . This shock measure does not vary across sectors and only emanates from one country, and thus the regression we run differs from the literature that analyses the propagation of idiosyncratic shocks across production networks.

In writing Equation (12) we make two important modifications to the model prediction (Equation (11)). First, instead of a constant parameter β , we allow the shock impact to vary by country and sector, thus replacing it with a $NJ \times 1$ vector β . Second, we add a set of country-sector specific “resistance” coefficients to the network transmission mechanism, a $NJ \times 1$ vector $\boldsymbol{\rho} - \text{diag}(\boldsymbol{\rho})$ indicates a $NJ \times NJ$ diagonal matrix containing the vector $\boldsymbol{\rho}$ on the diagonal and zeros off diagonal. The heterogeneous panel SAR setting allows for estimation of country-sector specific estimates of the coefficients β_{mi} and ρ_{mi} of the vectors β and $\boldsymbol{\rho}$, thanks to the time dimension of our data.¹⁵

¹²For papers that embed a basic production network framework into asset pricing models, see for example, Herskovic (2018) in a closed-economy setting, and Richmond (2019) for a multi-country setting.

¹³To see how the SAR setting is analogous to a traditional autoregression, it helps to rewrite Equation (12) as $\hat{\mathbf{q}}_t = \beta \widehat{\mathcal{M}}_{US,t} + \text{diag}(\boldsymbol{\rho}) \mathbf{W} \hat{\mathbf{q}}_t$.

¹⁴FOMC announcements do not occur every month, and at times multiple times within a month. We only include in our sample months with FOMC announcements, but the results are robust to including all months. For months with multiple announcements, we aggregate all announcement by adding up measures of monetary policy shock.

¹⁵For completeness we also report estimates where coefficients β and $\boldsymbol{\rho}$ are constrained to be the same across all country-sector pairs in Internet Appendix Table IA3.

We allow for country-sector heterogeneity in our estimated coefficients on theoretical and empirical grounds. Theoretically, β_{mi} is determined from the parameters of a specific model, such as the one outlined [Section 2](#) and Internet Appendix IA1, where households’ preferences for different goods or different competitive structures in different sectors, for example, lead to heterogeneous responses to U.S. monetary policy shocks across countries and sectors. In practice, these β ’s cannot be measured directly and are therefore estimated. [Equation \(11\)](#) assumes that the spatial pass-through of monetary policy shocks to stock returns is perfect ($\rho_{mi} = 1 \forall m, i$). This need not be the case in practice due to factors outside our conceptual framework, such as asset market frictions, which may add resistance to the shock transmission through the production network (i.e., through \mathbf{W}).¹⁶ For this reason we let the data determine the empirical estimate of ρ , again allowing for heterogeneity in this potential resistance across country-sector cells.¹⁷ It is worth emphasizing that identification of the effects of the U.S. monetary policy shocks on stock returns comes entirely from the time-series variation, as the shocks do not vary by country-sector.

Our static model abstracts from any steady-state differences across countries and sectors. While most of them would not affect our analysis of a temporary monetary policy shock effect on stock returns, there is one important exception. If countries or sectors differ in their steady-state growth rates of stock prices, we might erroneously assign these differences to the heterogeneous impact of the monetary policy shock. Thus, we absorb any country- or sector-level heterogeneity in baseline stock returns by adding a $NJ \times 1$ vector α of country-sector specific intercepts (fixed effects) to [Equation \(12\)](#). We also add an error term to arrive at the following estimation equation

$$\hat{q}_t = \alpha + (I - \text{diag}(\rho) \mathbf{W})^{-1} \beta \widehat{\mathcal{M}}_{US,t} + \varepsilon_t, \quad (13)$$

where $\forall t$ the $NJ \times 1$ vector of errors $\varepsilon_t = (I - \text{diag}(\rho) \mathbf{W})^{-1} \mathbf{u}_t$, where the elements of \mathbf{u}_t are assumed to be independently identically distributed. Because of the complex structure of our model, instead of computing analytical standard errors, suggested for the heterogeneous panel SAR by [Aquaro et al. \(2021\)](#), we use a wild bootstrap to construct standard errors that are robust to heteroschedasticity introduced by the structure of heterogeneous SAR in [Equation \(13\)](#). We describe the bootstrap procedure in detail later in this section.

Measuring Network Effects

The spatial autoregressive model allows us to decompose the *total* marginal effect of U.S. monetary policy on equity returns into a *direct* and *network (indirect)* effect. In particular, in contrast with linear regression models, the coefficient vector β is not equal to the total marginal effect of the U.S.

¹⁶For example, it is well established that momentum plays an important role in pricing stocks globally but is not generally correlated with macroeconomic shocks ([Griffin et al., 2003](#); [Fama and French, 2012](#)).

¹⁷Heterogeneity of ρ_{mi} may also be due to financial frictions, such as the liquidity premium, which may vary across countries and sectors ([Amihud et al., 2015](#)).

monetary shock $\widehat{\mathcal{M}}_{US,t}$ on stock returns $\widehat{q}_{mi,t}$. Instead, applying [Equation \(12\)](#), the $NJ \times 1$ vector of total marginal effects is given by

$$\mathbf{Total} \equiv (I - \text{diag}(\boldsymbol{\rho})\mathbf{W})^{-1}\boldsymbol{\beta}, \quad (14)$$

where $\boldsymbol{\rho}$ and $\boldsymbol{\beta}$ are the estimated vectors of parameters. Specifically, for each country-sector cell, the total marginal effect of U.S. monetary policy shock includes a direct impact as well as the sum of all indirect effects resulting from linkages expressed in the input-output matrix \mathbf{W} . The $\boldsymbol{\rho}$ -weighted Leontief inverse matrix, $(I - \text{diag}(\boldsymbol{\rho})\mathbf{W})^{-1}$, is an infinite sum of all immediate and indirect production linkages of all lengths. For example, consider an easing in U.S. monetary policy that raises consumption demand for all goods in the U.S., including Apple's iPhone. Conditional on U.S. consumers' preferences, Apple's revenues, profits and stock price will rise. Further, to meet the increased U.S. demand for iPhones, there will be increased demand for firms assembling iPhones in China, as well for firms in Germany and Korea supplying components to assembly firms in China, as the initial demand shock propagates up Apple's global production chain. As a result, we would also expect to see stock prices rising for the Chinese, German, and Korean suppliers that are part of this production chain, and the size of these increases will be proportional to the importance of the firms' goods in the production of the iPhone. The **Total** effect of the U.S. monetary policy shock accounts for all of such spillovers, as well as the initial impact on Apple.

There are a number of ways to decompose the **Total** effect in order to extract the contribution of the global production network in transmitting U.S. monetary policy across equity markets.

Our baseline approach follows [Acemoglu et al. \(2016\)](#) and performs the following decomposition:

$$\mathbf{Direct}_{AAK} \equiv \boldsymbol{\beta}, \quad (15)$$

$$\mathbf{Network}_{AAK} \equiv \mathbf{Total} - \mathbf{Direct}_{AAK}, \quad (16)$$

where the direct measures are simply equal to the estimated vector of coefficients $\boldsymbol{\beta}$, reflecting only the immediate impact of U.S. monetary policy shocks on stock returns of each country-sector cell.¹⁸ All effects intermediated by production linkages included in the network effect.¹⁹

Alternatively, we may follow the textbook approach of [LeSage and Pace \(2009\)](#), where the **Total** effect for each mi can be decomposed into a direct and network effects as

$$\mathbf{Direct}_{LP} \equiv \text{diag} [(I - \text{diag}(\boldsymbol{\rho})\mathbf{W})^{-1}] \boldsymbol{\beta}, \quad (17)$$

$$\mathbf{Network}_{LP} \equiv \mathbf{Total} - \mathbf{Direct}_{LP}, \quad (18)$$

where \mathbf{Direct}_{LP} and $\mathbf{Network}_{LP}$ are $NJ \times 1$ vectors. The key aspect of this decomposition is that in addition to the immediate impact of the shock on the country-sector cell, \mathbf{Direct}_{LP} includes

¹⁸This corresponds to the pure final demand effect of the U.S. monetary policy shock as derived in the model.

¹⁹Given that we are working at the sector level, the \mathbf{Direct}_{AAK} will include spillover effects across firms within the same sector in the same country.

round-trip (indirect) transmission of the shock to each country-sectors' returns back to themselves, and will thus be larger than \mathbf{Direct}_{AAK} . We find that this measure is less appropriate for the analysis of the network effects at the sector level, because round-trip transmission to the same country-sector cell likely reflects a different step in the production chain and therefore would not be attributed to a direct effect in a more disaggregated network.

Our primary object of interest is not the absolute size but the share of the **Network** effect in the **Total** effect. We calculate this share for each country-sector when we estimate the heterogeneous SAR model, and present the mean value across country-sector estimates along with corresponding standard errors.

Reporting and Standard Errors

Results are reported as simple average values of β , ρ , **Direct** and **Network** effects across all country-sectors. We also examine the *cross-country* transmission of U.S. monetary policy shocks by splitting the effects into domestic and international components. Specifically, the *international* direct and network effects are computed as simple averages of the elements of **Direct** and **Network** across all the non-U.S. country-sectors. We take simple averages of the elements of **Direct** and **Network** over only U.S. sectors in order to compute the U.S.-only direct and network effects.

Given the time dimension of our panel is short (66 time periods in the benchmark) relative to the spatial dimension (an unbalanced panel of 26 countries and 54 sectors with the total of 671 country-sector cells), and our shocks only vary over time, we are concerned that the analytical standard errors proposed by [Aquaro et al. \(2021\)](#) are unreliable in our setting. Thus, we turn to a bootstrap approach to compute standard errors. In a standard bootstrap approach one uses random subsamples of the data to re-estimated a model. This, however, is not an option for our set-up, because estimates of β and ρ in the panel SAR strongly depend on the ordering of \mathbf{W} and because $\widehat{\mathcal{M}}_{US,t}$ does not vary across country-sector cells. Thus, for our model the best approach is a wild bootstrap, in which random perturbations are added to the dependent variable by multiplying residuals by a random variable drawn from a specific distribution.²⁰

We compute standard errors using the wild bootstrap procedure with continuous distribution proposed by [Mammen \(1993\)](#). This procedure allows for heteroschedasticity, and in addition we allow for cross-section correlation of errors by implementing a cluster version of this procedure; i.e., we draw random variables for the size T vector and repeat the same perturbation for all country-sector cells within a given time period. We bootstrap standard errors for each element of β , ρ , **Direct**, **Network**, and the share of **Network** in **Total**, as well as for their overall, international, and U.S. average values. To do so, for each iteration z of the 500 repetitions we replace our

²⁰In contrast with the standard residual bootstrap, a wild bootstrap allows for heteroschedasticity ([Davidson and Flachaire, 2008](#)) and is frequently used in heteroschedastic models as well as models with multiple equations.

dependent variable with a synthetic one that is equal to the fitted values from the main estimation plus a random perturbation $\nu_{mi,t}$ of the residuals:

$$\widehat{\mathbf{q}}_t^z = \mathbf{a} + (I - \text{diag}(\mathbf{r}) \mathbf{W})^{-1} \mathbf{b} \widehat{\mathcal{M}}_{US,t} + \boldsymbol{\nu}_t^z \circ \mathbf{e}_t,$$

where $NJ \times 1$ vectors \mathbf{a} , \mathbf{b} , and \mathbf{r} are estimates of $\boldsymbol{\alpha}$, $\boldsymbol{\beta}$, and $\boldsymbol{\rho}$, respectively, and \mathbf{e}_t is a $NJ \times 1$ vector of estimated residuals for each t .

We use a continuous distribution from which we draw 500 perturbations for each time period, and then repeat for each element $\nu_{mi,t}^z$ of each vector $\boldsymbol{\nu}_t^z$:

$$\nu_{mi,t}^z = \frac{\xi_t^z}{\sqrt{2}} + \frac{1}{2} [(v_t^z)^2 - 1], \quad \forall m \forall i,$$

where ξ and v are drawn from independent standard normal distributions. We then estimate our SAR model replacing the true dependent variable with a synthetic one and retain estimation results. Standard deviations of each estimated parameter across 500 repetitions are reported as standard errors.

4 Data

We source data from two main datasets: the global production network data are from the World Input-Output Database (WIOD), and the stock market information is from the Thompson-Reuters Eikon database (TREI). The WIOD provides annual data for input-output linkages across 56 sectors and 43 countries and a rest of the world aggregate for 2000–14.²¹ For our analysis, we limit the data to 26 countries with active stock markets and 54 sectors that are connected to each others.²²

From TREI, we obtain end-of-period monthly stock prices, stock market capitalization, and industrial classification for individual companies from 2000–16.²³ We then construct our own stock return indexes for the same sector definitions as used in WIOD, using stock market capitalization of the firm as a weight. This is not straightforward, given that the TREI sector classification uses Thomson-Reuters Business Classification (TRBC), while the World Input-Output Tables are constructed under International Standard Industrial Classification (ISIC) Revision 4. Fortunately, in addition to TRBC, TREI also reports North American Industry Classification System (NAICS) 2007 sector codes for each firm, which we use to create a crosswalk to ISIC Rev. 4. This then allows us to aggregate firms’ stock market indices into WIOD-based sectors.²⁴ For each of the resulting

²¹This current WIOD database, which has a higher level of disaggregation only begins in 2000, while the older version begins in 1995, but a change of sectoral classification makes it impossible to merge the two sets of tables.

²²The remaining two sectors, household production (“T” in WIOD codes) and extraterritorial organization (“U”) are not sufficiently connected to the rest of the network.

²³We are constrained to starting the sample period in 2000 in order to capture large sample of country-sectors stock returns.

²⁴Even with these data, there is not always a 1-to-1 correspondence between the TREI and WIOD codes, and we rectify such instances in a variety of ways as described in Internet Appendix IA2.

country-sector cells we construct monthly stock returns as a log change in weighted average of stock prices of all firms in that country-sector cell. We then multiply these returns by month-on-month exchange rate changes vis-à-vis the U.S. dollar, and annualize the monthly U.S. dollar returns for all our analysis.²⁵

Table A1 presents cross-country sector coverage of monthly returns for the months where there are monetary surprise shocks over 2000–16. Given cross-country differences in size, sectoral specialization patterns, and stock market depth we see that larger countries (e.g., the United States) have a larger coverage of sectors, while some countries only cover a few sectors (e.g., Portugal and Russia). Further, as **Table A2** shows, there is also heterogeneity in the coverage of stock returns across the sectoral dimension. These differences motivate a flexible empirical approach, where we allow for country-sector fixed effects as well as country-sector specific coefficients for the effect of the monetary policy shock variable.

4.1 Input-Output Coefficient Construction

The construction of the global input-output matrix using WIOD data is standard and follows from the literature. We denote countries as $m, n \in [1; N]$ and sectors as $i, j \in [1; J]$. WIOD provides information of output produced in a given country-sector and where it flows to; both geographical and what sector of the economy (including government and households). We first use this information to build a matrix \mathbf{W} , which is $NJ \times NJ$, where each element $w_{mi,nj}$ represents the use of inputs from country m sector i as a share of total output of sector j in country n .²⁶

$$w_{mi,nj} = \frac{Sales_{mi \rightarrow nj}}{Sales_{nj}}.$$

In network terminology, \mathbf{W} is the adjacency matrix that gives us direct linkages between each pair of country-sector cells. Because by construction $w_{mi,nj} \in [0; 1]$ and $w_{mi,nj} \neq w_{nj,mi}$, the network is weighted and directed. Note that we use all countries and sectors when constructing the adjacency matrix, but only exploit the sub-matrix where we have stock returns in the estimation below. This requires a re-normalization of the matrix for estimation purposes, but all preliminary statistics are based on manipulating the adjacency matrix without this re-normalization.

The top row of **Figure 1** presents the empirical counter cumulative distribution function (CCDF) of the weighted outdegree of \mathbf{W} for WIOD data, where we use the average input-output coefficients over the sample period 2000–14. The weighted outdegree for a given country-sector pair mi is defined as

$$out_{mi} = \sum_{n=1}^N \sum_{j=1}^J w_{mi,nj},$$

²⁵We confirm that our results are robust to using domestic currency returns as well as real returns. We do not explicitly study the effects of exchange rate changes. For the recent discussion of complex relationship between exchange rates and stock prices, see [Karolyi and Wu \(2020\)](#).

²⁶Note that it is analogous to $\omega_{mi,nj}$ in conceptual framework.

and measures how important a given country-sector’s inputs are for production use across all possible country-sector pairs. It is informative to look at this distribution, since a skewed one implies the potential for shocks to propagate and amplify across the production network (Acemoglu et al., 2012). Panel (a) plots the distribution using all possible input-output linkages in the world including both domestic and international linkages in computing the weighted outdegree, while panel (b) exploits only the international linkages. As it can be seen in both figures, the distributions are very skewed. The curves were fitted using a Pareto distribution and as can be seen the slopes of the tail are steep, implying that the distributions are fat-tailed. This finding is along the lines of what Carvalho (2014) shows for the U.S. economy using detailed input-output tables from the Bureau of Economic Analysis. In comparing panels (a) and (b), it is worth noting that the x-axis of the two figures are on two different scales. In particular, the international weighted-outdegree measures tend to be smaller on average than those using the full world input-output table (which includes domestic linkages) as several country-sector cells are not used as intermediate inputs (or in very tiny amounts) abroad.

Next, panels (c) and (d) examine how the outdegree distributions have changed over time. Specifically, we calculate the correlation of the out_{mi} measures for each year with those of 2000. As can be seen, both for world linkages in panel (c) and international linkages in (d), the correlation has been falling over time, indicating a “re-shuffling” of the global production network. However, the change in correlation has been relatively small, indicating that the cross-country cross-sector distribution of the importance of key suppliers has not changed dramatically over our sample period.

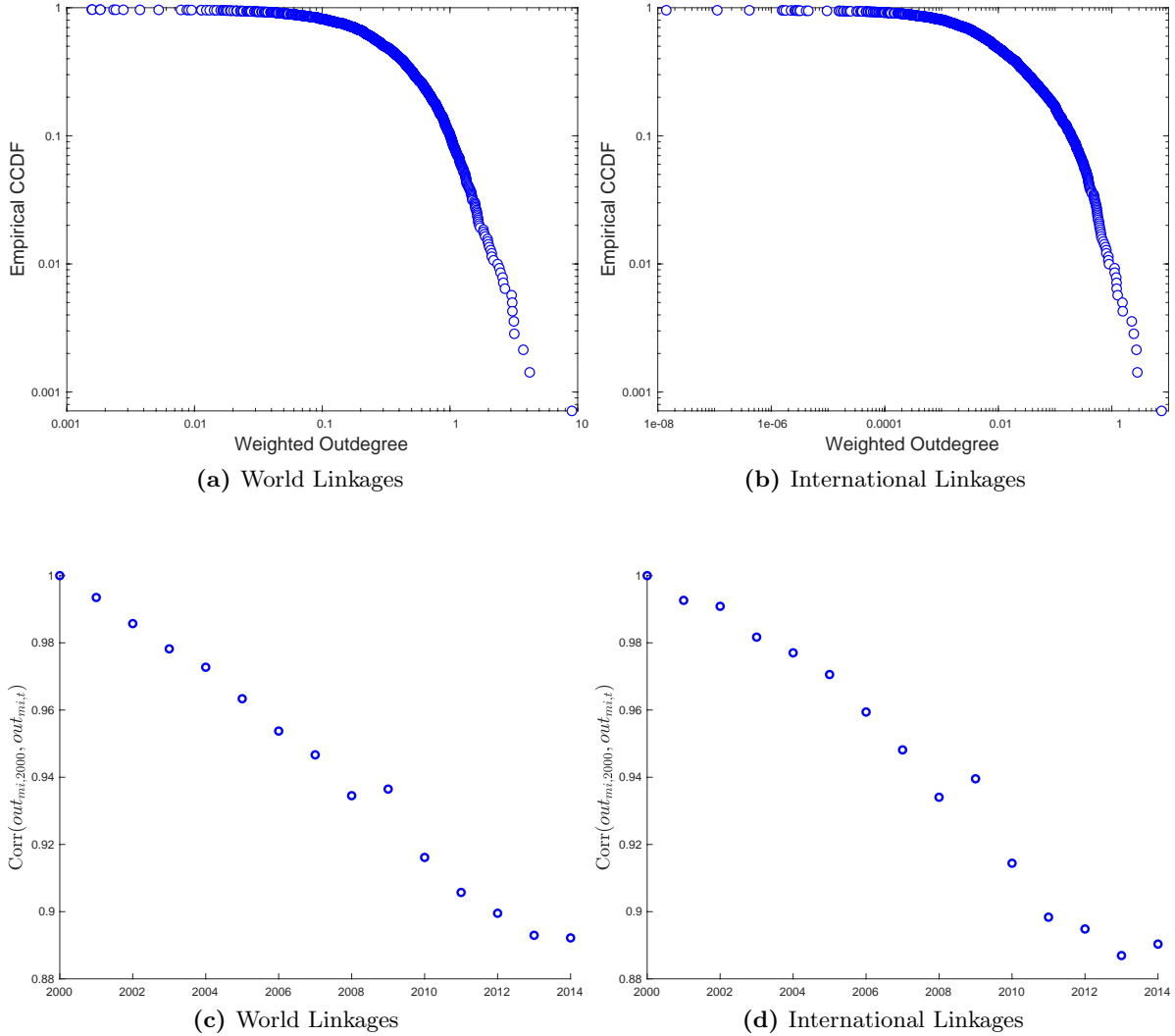
Overall, the skewness of the upstream linkages points to *a priori* evidence that the monetary policy shocks will propagate heterogeneously across different country-sectors via the global production network, which further motivates our choice of estimating a heterogeneous panel SAR as the baseline.

Next, we present the distribution of the U.S. consumption of country-sectors’ final goods in **Figure 2**. Given that we are studying the effects of a demand shock emanating from the U.S., we plot the distribution of U.S. imports of a given country-sector’s final consumption goods relative to total output of the good produced by that country-sector – using the notation from our framework, this would correspond to $c_{nj,USA}$, U.S. consumption of goods produced by sector j in country n . We use this measure to compare the estimated effects and “closeness to final consumers” in the United States.²⁷ Panel (a) includes all the country-sector pairs of the world that are in our sample of 26 countries and 54 sectors, thus it also includes U.S. own consumption of final goods produced domestically. Panel (b) drops the U.S. country-sector pairs. As it can be seen in the plots, there is substantial heterogeneity across country-sector pairs, but the distribution is not as skewed as the world input-output matrix. The cross-sectional heterogeneity in $c_{nj,USA}$ allows us to test whether

²⁷This measure is motivated by, but is different from the one used in Ozdagli and Weber (2017).

Figure 1. Distribution of Weighted Outdegree for WIOD

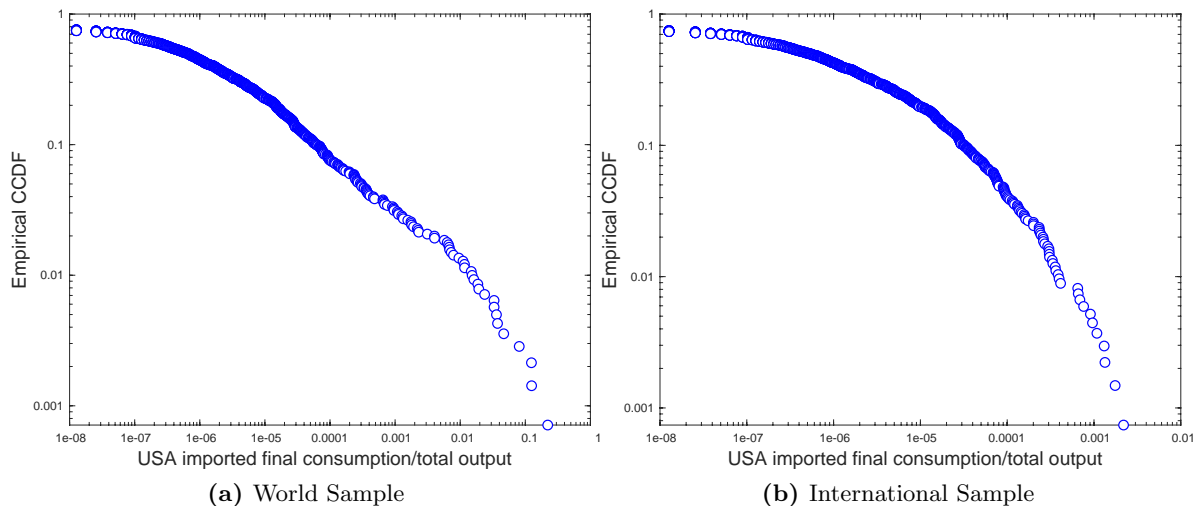
The first row of this figure plots the counter cumulative distribution function of the weighted outdegree using the average of the WIOD annual database over 2000–14. The second row of the figure plots changes in the distribution of country-sector weighted outdegrees, where the change is measured as the correlation of the vector of each year’s country-sector outdegree measures with the vector of these measures for the year 2000. The panels with World Linkages are based on the full WIOD table, while the International Linkages panels use only internationally connected country-sector cells (i.e., we omit the domestic-only linkages across sectors) in constructing the weighted outdegree measure.



the impact of U.S. monetary policy shocks on stock returns country-sectors that are “closer” to the U.S. are driven relatively more by the **Direct** than the **Network** share, as one would expect from the structural model written down in Internet Appendix IA1.

Figure 2. Closeness to U.S. Consumers

This figure presents the distribution of a country-sector’s sales of final consumption goods to the U.S. relative to the country-sector’s total output using 2000 data source from WIOD. Panel (a) presents the distribution for all country-sector cells in the 26 countries and 54 sectors sample, while panel (b) drops U.S. country-sector cells for the international sample.



4.2 Returns Data

We next explore our data and show that there is a relationship between stock return correlations and input-output linkages. As described previously, a unit of observation in our data is monthly stock returns in country m and sector i . We express all returns in U.S. dollars to remain consistent with our conceptual framework, and we also annualize the returns. Given that not all sectors are present in all countries, we have stock indexes for 671 out of possible 1404 country-sector cells for each month from January 2000 through December 2016.²⁸ Figure 3 presents the distribution of pairwise correlations between each possible pair of the 671 time series of stock returns. We can see that most correlations are positive and that the mass of the distribution is between 0 and 0.5.²⁹

Returns and the Input-Output Network

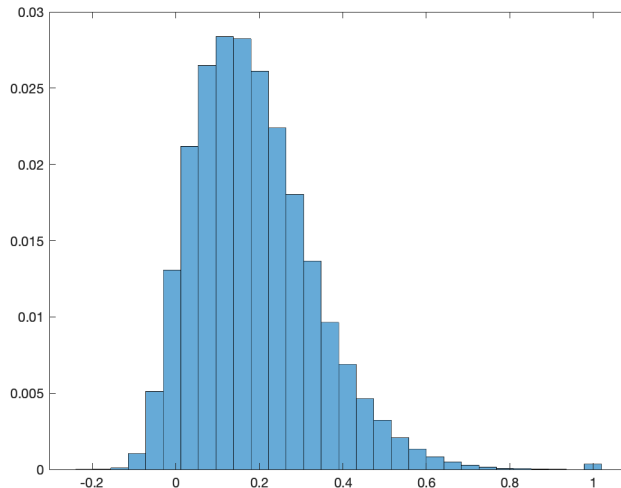
Our main goal is to explore whether stock market correlations are associated with production linkages. To do so, we first compute a measure of distance between each pair of country-sector cells. The concept of distance is better defined for binary networks. Thus, for illustrative purposes, we replace $w_{mi,nj} < 0.05$ with 0, and the rest of the cells with 1, converting our network into a

²⁸Recall that we have potentially a maximum of 54 sectors and 26 countries. The number of possible country-sectors is further restricted to insure that \mathbf{W} is full rank for estimation purposes, even if stock returns data may exist for some of these country-sectors.

²⁹We obtain a similar distribution for local-currency returns.

Figure 3. Correlation of Stock Returns over the Entire Sample

This figure plots the distribution of pairwise correlations of annualized U.S. dollar monthly stock returns over 2000–16 across 26 countries and 54 sectors.



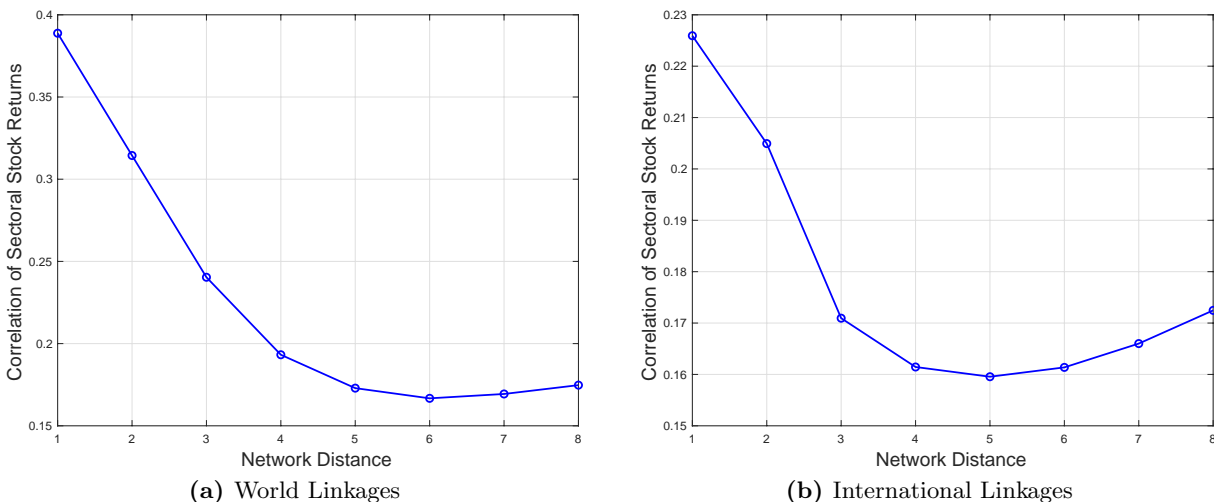
binary one. In such a network, the distance between two cells is defined as the length of the shortest path (geodesic) between them.

We use this concept of distance for each pair of country-sector cells and compare it to the correlation of stock returns for this pair of country-sector cells. [Figure 4](#) plots this relationship, where we compute the average directional distance between any two country-sector cells (i.e., the average of $mi \rightarrow nj$ and $nj \rightarrow mi$ path lengths). Even though the diameter, the longest distance, of the input-output network averaged over time is 23, we only plot distances up to 8 because for any distances longer than that the decline in stock price correlation levels off. The figure’s vertical axis shows the average stock price correlation for all country-sector cell pairs that are at a given distance from each other in the network, shown on the horizontal axis.

In panel (a), which uses the full set of country-sector cells, we can see that pairs most closely connected through input-output linkages exhibit the highest correlation of stock returns (correlation coefficient of 0.39). The larger is the distance, the lower is the correlation. We can see that it tapers out just below 0.17 for any distance over 4. Panel (b) shows that a similar pattern holds when we exclude all domestic sector pairs from the analysis, with highest average correlation of 0.23. This finding alleviates a concern that our results are driven entirely by domestic input-output linkages and stock return correlations. We can see that even excluding domestic linkages, the country-sector cells that are most highly connected exhibit a stronger correlation of stock returns than those country-sector cells at a greater distance from each other in the global production network.

Figure 4. WIOD Network Distance of Supply Linkages and the Correlation of Stock Returns

This figure plots correlations of U.S. dollar annualized monthly stock returns over 2000–16 across 26 countries and 54 sectors on the y-axis, across network distance bins based on the direct bilateral supply linkage using the average of the WIOD annual database over 2000–14. The elements of the IO matrix are defined as country-sector mi 's usage of country-sector nj 's good as an intermediate divided by mi 's gross output. The panel with World Linkages is based on the full WIOD table, while the International Linkages panel extracts the correlation and distance variable for only internationally connected country-sector cells (i.e., we omit the domestic-only linkages across sectors).



These two figures provide *prima facie* evidence that two sectors that rely more heavily on each other for the supply of inputs in productions also have more highly correlated stock returns. However, these bilateral correlations may be driven by numerous transmission channels or shocks, and are silent on how shocks are transmitted via the overall network.

4.3 Monetary Policy Shocks and Global Financial Cycle Correlates

Our baseline measure of U.S. monetary policy shocks is sourced from [Jarociński and Karadi \(2020\)](#). They construct a measure of an interest rate surprise as the change in the 3-month Federal Funds future rate, which they interpret as the expected federal funds rate following the next policy meeting. The change in the futures rate is calculated in the 30-minute window around the time of the Federal Open Market Committee (FOMC) press release, which is 2 p.m. East Coast time on the day of a regular FOMC meeting.³⁰

We explore the robustness of our regression results to conditioning on other correlates of the global financial cycle, namely the VIX, 2-year U.S. Treasury rate, and broad U.S. dollar index. The VIX is obtained from Federal Reserve Economic Data (FRED). The 2-year U.S. Treasury rate and

³⁰This measure of monetary surprise shocks is common in the literature, and follows the work of [Gertler and Karadi \(2015\)](#). Note that we aggregate shocks within months for the (infrequent) months where there are multiple announcements.

broad U.S. dollar index are obtained from the Board of Governors of the Federal Reserve (series H.15 and H.10, respectively). We take the monthly log difference of the VIX and broad U.S. dollar index and the monthly first difference of the 2-year U.S. Treasury rate before including them in the regressions below. The VIX and dollar index are common variables used to capture the global financial cycle (e.g., [Bruno and Shin, 2015a](#); [Miranda-Agrippino and Rey, 2020](#)), while changes in the 2-year U.S. Treasury rate captures the overall change in U.S. monetary policy stance as well as the cost of funding.³¹ Moreover, the unique role of the U.S. dollar as an international currency make it especially important to control for the exchange rate channel of the U.S. monetary policy shock transmission, which is another reason to include the dollar index as a potential omitted variable.

Given potential contemporaneous monetary policy shocks across countries, we check the robustness of our results by including the ECB and Bank of England monetary policy shocks constructed by [Cieslak and Schrimpf \(2019\)](#). To best match the definition we use for the U.S. monetary policy shock, we use the series that are not decomposed into monetary and non-monetary news. We include these shocks along with the U.S. monetary policy shock vector in order to control for potential foreign monetary responses to U.S. monetary policy, and which would be picked up in the network contribution if omitted. Finally, we also exploit U.S. monetary policy shocks from [Nakamura and Steinsson \(2018\)](#), [Bu et al. \(2021\)](#), and [Ozdogli and Weber \(2017\)](#) for further robustness checks.

5 Empirical Results

We present our results starting with the baseline least-squares regression to give an idea of the overall effect of U.S. monetary policy shocks on global stock returns. We proceed with a spatial autoregression (SAR) to identify the portion of the effect that is due to production network linkages, and to provide ample evidence of the robustness of our benchmark SAR specification. In particular, we condition stock returns on the drivers of the global financial cycle and show that our benchmark results are only minimally affected by this change in specification. Finally, we show that our baseline direct and network effects are not driven by specific countries or sectors.

5.1 Linear Regression Results

To establish a baseline, we estimate a simple linear regression that ignores any spatial network effects:

$$\hat{q}_{mi,t} = \alpha + \beta^{LS} \widehat{\mathcal{M}}_{US,t} + \varepsilon_{mi,t}, \quad (19)$$

where α represents either a constant or different sets of fixed effects.³² Effectively, this estimation strategy imposes the restriction of spatially uncorrelated country-sector cells in the SAR framework

³¹The 2-year U.S. Treasury rate is a more convenient measure than the Federal Funds rate because it never reached the zero lower bound and because it is highly correlated with the “shadow” Federal Funds Rate, such as the one proposed by [Wu and Xia \(2016\)](#), while at the same time being a more transparent measure.

³²We cannot include time fixed effects in the regression because monetary policy shocks vary only over time,

of (13); i.e., setting $\rho = 0$. As a result, the network and direct effects are captured in the estimate β^{LS} .

The results of the estimation use the Jarociński and Karadi (2020) monetary policy shock series for 2000–07 sample period are reported in Table 1.³³ The simple OLS estimate in column (1) implies that a one percentage point surprise in monetary policy easing results in a 2.7 percentage points rise in the average country-sector monthly stock return.³⁴ The standard errors increase substantially when we cluster them at the monthly (t) level, as reported in column (2), which should be expected given that the monetary policy shock is being repeated for each country-sector return in a given time period of the panel and because of the strong factor structure in panels of stock return. The magnitude of the effect does not change much whether we control for country, sector, or country-sector fixed effects (column (3)). We use the (most restrictive) country-sector fixed effect specification as our baseline for the linear regression.

Keeping in mind that our conceptual framework allows for U.S. monetary policy shocks to have heterogeneous effects across country-sector pairs, we allow for heterogeneous values of β for each mi in our estimation procedure. This estimation strategy is possible because of the time dimension of our data. First, we estimate a random coefficients model with β 's varying across country-sector panels. We find that the average coefficient estimate declines slightly, as shown in column (4). Second, we use a Mean Group estimator (Pesaran and Smith, 1995) with groups defined as country-sector pairs in column (5). In this case, the average β is somewhat larger than the random-coefficient estimate (in absolute value), but still smaller (in absolute value) than the least-squares estimates.

Finally, to compare our findings with existing country-level analysis, we aggregate the individual firm stock returns to the country level and estimate a country fixed effects linear regression, which is reported in column (6). We find that the coefficient for this country-time panel specification is slightly larger (in absolute value) than the estimated coefficient based on country-sector level data, but with larger standard errors. Further, the point estimate is in line with other estimates from the literature (e.g., Ehrmann and Fratzscher, 2009).³⁵ The use of monthly returns is justified by findings that most of the equity premium resulting from changes in the U.S. monetary policy is reflected in the first four weeks following the announcement (Bernanke and Kuttber, 2005; Cieslak

³³The results for other monetary shock measures and other time periods are nearly identical and can be obtained from the authors upon request. The exception is including 2008, which lowers the magnitude of the effect. Furthermore, because the dependent variable is the stock return, including a lagged dependent variable in these regression does not alter the results.

³⁴Unless stated otherwise, all our results are in terms of annualized U.S. dollar monthly returns, as discussed above in Section 4.

³⁵Ammer et al. (2010), using hourly returns, find the effect that is about twice as large as ours, for both domestic and foreign stock returns. Miranda-Agrippino and Rey (2020) find, in a much longer sample, an impulse response that is also about twice as large as ours for the effect of the increase in the federal funds rate on the U.S., U.K., and German stock indexes.

Table 1. Least-Squares Regression Estimation: Full Sample

This table reports coefficients from linear regressions where the dependent variable $\hat{q}_{mi,t}$ is the annualized U.S. dollar country-sector monthly stock return in columns (1)-(5) and the country market return in column (6), over 2000–07 in months with FOMC announcements, and the independent variable $\widehat{\mathcal{M}}_{US,t}$ is the measure of the U.S. monetary policy shock taken from [Jarociński and Karadi \(2020\)](#). There are 49,667 observations in columns (1)-(5), and 1,716 observations in column (6). Standard errors are in parentheses. All coefficients are significant at (at least) the 5% confidence level.

$$\hat{q}_{mi,t} = \alpha + \beta^{LS} \widehat{\mathcal{M}}_{US,t} + \varepsilon_{mi,t}$$

	(1)	(2)	(3)	(4)	(5)	(6)
MP shock	-2.669 (0.208)	-2.669 (1.303)	-2.74 (1.311)	-2.454 (0.320)	-2.533 (0.266)	-3.110 (1.046)
Constant	0.993 (0.013)	0.993 (0.090)	0.992 (0.091)	0.893 (0.029)	1.013 (0.026)	0.526 (0.086)
Adjusted R^2	0.0033	0.0033	0.0482			0.0646
Wald χ^2				58.65	90.54	
Estimator	OLS	OLS	LS	Random coeffs	Mean Group	LS - country
Fixed effects	None	None	<i>mi</i>	Random	<i>mi</i>	<i>m</i>
St. errors	Regular	Clustered on t		Conventional	Group-specific	Clustered on t

[et al., 2019](#)) and with at least 3-4 days delay even for U.S. firms ([Chava and Hsu, 2019](#)).³⁶

Table 2 reports least-squares regression results where we split the sample into all foreign countries (Panel A) and only the United States (Panel B). The overall point estimates for the international sample in Panel A are somewhat smaller than the baseline estimates using the whole sample of **Table 1** for the country-setor returns in columns (1)-(5), with the impact of a one percentage point innovation in U.S. monetary policy moving foreign country-sector returns by approximately 2.5 percentage points. Turning to the country-level returns in column (6), the point estimate is also similar to the estimate reported in **Table 1**. Turning to Panel B and the results for the United States, we see that the point estimates are larger (in absolute value) than the pooled sample’s estimates across all specifications, with an estimated impact of a one percentage point change in U.S. monetary policy impacting the average sector return by approximately four percentage points across columns (1)-(5), and three percentage points in looking at the overall market return in column (6). This magnitude of the effect is consistent with the literature (e.g., [Ehrmann and Fratzscher, 2004](#); [Bernanke and Kuttber, 2005](#); [Ozdogli and Weber, 2017](#)).

The linear regressions do not allow to condition on the network structure and therefore β^{LS}

³⁶Moreover, at least for the cases when monetary policy shocks do not fall on the first day of the month, using monthly returns side steps the 24 hour pre-announcement drift in the response of U.S. stock returns to FOMC scheduled announcements documented by [Lucca and Moench \(2015\)](#).

Table 2. Least-Squares Regression Estimation: International and United States Sub-Samples

This table reports coefficients from linear regressions where the dependent variable $\hat{q}_{mi,t}$ is the annualized U.S. dollar country-sector monthly stock return in columns (1)-(5) and the country market return in column (6), over 2000–07 in months with FOMC announcements, and the independent variable $\widehat{\mathcal{M}}_{US,t}$ is the measure of the U.S. monetary policy shock taken from [Jarociński and Karadi \(2020\)](#). Panel A includes all countries except the United States (25 countries in total, 46,357 observations in columns (1)-(5), 1,650 observations in column (6)), and Panel B includes only the United States (3,310 observations in columns (1)-(5), 66 observations in column (6)). Standard errors are in parentheses. All coefficients are significant at (at least) the 10% confidence level.

$$\hat{q}_{mi,t} = \alpha + \beta^{LS} \widehat{\mathcal{M}}_{US,t} + \varepsilon_{mi,t}$$

	(1)	(2)	(3)	(4)	(5)	(6)
Panel A. Excluding the United States						
MP shock	-2.553 (0.221)	-2.553 (1.378)	-2.625 (1.386)	-2.322 (0.338)	-2.405 (0.279)	-3.114 (1.080)
Constant	1.035 (0.014)	1.035 (0.094)	1.034 (0.094)	0.932 (0.030)	1.054 (0.027)	0.542 (0.088)
Adjusted R^2	0.0029	0.0029	0.0457			0.0616
Wald χ^2				47.11	74.07	
Panel B. United States only						
MP shock	-4.308 (0.407)	-4.308 (0.702)	-4.308 (0.709)	-4.068 (0.811)	-4.418 (0.726)	-2.990 (0.594)
Constant	0.411 (0.026)	0.411 (0.074)	0.411 (0.074)	0.371 (0.037)	0.414 (0.030)	0.142 (0.054)
Adjusted R^2	0.0325	0.0328	0.047			0.1476
Wald χ^2				25.18	37.01	
Estimator	OLS	OLS	LS	Random coeffs	Mean Group	LS - country
Fixed effects	None	None	<i>mi</i>	Random	<i>mi</i>	<i>mi</i>
Standard errors	Regular	Clustered on <i>t</i>		Conventional	Group-specific	Clustered on <i>t</i>

combines both direct and network effects. We therefore next turn to the spatial autoregression setup to be able to measure these two effects separately.

5.2 Heterogeneous SAR Results

We now allow for network effects by estimating a spatial autoregression model. We first present results of the heterogeneous coefficients SAR model in [Table 3](#), where we allow for country-sector fixed effects following [Elhorst \(2014\)](#).³⁷ We estimate the regression with maximum likelihood

³⁷See Internet Appendix Table IA3 for results using a homogeneous SAR model. Results in this estimation generally match up with our baseline heterogeneous estimates.

following [Aquaro et al. \(2021\)](#), and bootstrap standard errors for all parameters as well as for the decompositions, using a wild panel bootstrap with 500 repetitions. Our baseline estimation table presents both the [LeSage and Pace \(2009\)](#) and [Acemoglu et al. \(2016\)](#) direct and network decompositions. We then present only the [Acemoglu et al. \(2016\)](#) decomposition for additional results in order to save space, and because this methodology omits the own-sector round-trip effect when calculating the direct effect of the transmission of U.S. monetary policy shocks to global stock markets.

Panel A of [Table 3](#) shows the average values of β and ρ . We report averages across all country-sectors, for country-sectors outside of the U.S., and for U.S. sectors only. The full distribution of these estimates are reported in Internet Appendix Figure IA1. The number of observations corresponds to the number of country-sector cells that contribute to each average. In Panel B, we report **Direct**, **Network**, and the share of **Network** in **Total** across country-sectors using the two approaches discussed previously. Because the decomposition is conducted at the country-sector level, we report the averages of **Direct**, **Network**, and the share of **Network** in **Total** for all country-sectors, for country-sectors outside of the U.S., and for U.S. sectors only. The full distribution of direct and network effects is reported in [Figure 5](#).³⁸

The first point to note is that the sum of the estimated **Direct** and **Network** effects – i.e., the **Total** effect – line up with the least-squares estimates of [Table 1](#) as we would expect. Turning to our headline result, we find that for the full sample, nearly 70% of the average total effect of the U.S. monetary policy shock on global stock returns is due to the transmission through production network using our preferred decomposition method [Acemoglu et al. \(2016\)](#). In fact, we can see from [Figure 5](#) that network effect is negative for a larger subset of country-sector cells than the direct effect. This results from the high estimated coefficient of shock propagation, ρ , which is on average 0.63. Interestingly, this average ρ is less than one, the value implied by our conceptual framework, due to unmodelled resistance to the transmission of shocks across international stock markets via the global production network. Further, the network effect also explains over half of the total effect if we use the [LeSage and Pace \(2009\)](#) decomposition, and shows the robust importance of global production networks in transmitting U.S. monetary policy shocks in our baseline estimation.

Computing averages for foreign country-sectors and for the U.S. sectors separately, we can see the pattern of transmission of U.S. monetary policy shocks to stock returns globally. We see a larger direct effect of U.S monetary policy shock on U.S. sectors than foreign sectors, which is expected.

³⁸Note that heterogeneity of the total effects is comprised of both heterogeneity of the input-output coefficients, and heterogeneity of the impact and propagation coefficients, β and ρ . Internet Appendix Figure IA1 shows that the impact and propagation coefficients do vary substantially across sectors. To check whether this distribution is related to the importance of a given sector-cell in the production network, we computed the eigenvector centrality of each country-sector in the input-output network, following [Richmond \(2019\)](#). We find that total effect is, in fact, uncorrelated with the eigenvector centrality measure (the correlation coefficient is -0.02), pointing to the importance of allowing for variation in SAR coefficients.

Table 3. Heterogeneous Spatial Autoregression Panel Estimation: Baseline Specification and Decompositions

This table reports results from heterogeneous coefficient spatial panel autoregressions (Equation (13)) where the dependent variable is the annualized U.S. dollar country-sector monthly stock return over 2000–07 over months with FOMC announcements, and the independent variable is the measure of the U.S. monetary policy shock taken from Jarociński and Karadi (2020). There are 44,286 total observations comprised of 671 country-sectors over 66 months. LP09 and AAK16 refer to the decomposition methodologies in LeSage and Pace (2009) and Acemoglu et al. (2016), respectively. Standard errors (in parentheses) are obtained via wild bootstrap with 500 repetitions. All coefficients are significant at the 1% confidence level.

$$\widehat{\mathbf{q}}_t = \boldsymbol{\alpha} + (I - \text{diag}(\boldsymbol{\rho}) \mathbf{W})^{-1} \boldsymbol{\beta} \widehat{\mathcal{M}}_{US,t} + \boldsymbol{\varepsilon}_t$$

Panel A. Coefficient Estimates

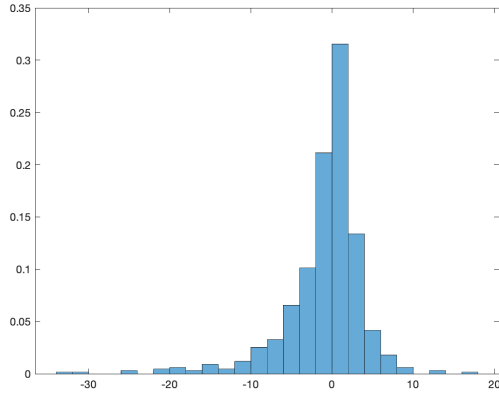
	Average β	Average ρ	Observations
Full sample	-0.907 (0.094)	0.632 (0.028)	44,286
International	-0.828 (0.101)	0.635 (0.029)	40,986
USA	-1.871 (0.271)	0.585 (0.044)	3,300

Panel B. Total Effect Decomposition

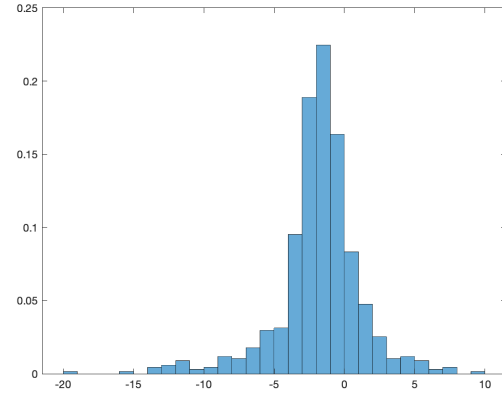
	Avg. Direct	Avg. Network	Network/Total
<i>Decomposition 1 (AAK16)</i>			
Full Sample	-0.907 (0.274)	-1.808 (0.317)	0.666 (0.064)
International	-0.828 (0.101)	-1.757 (0.322)	0.680 (0.068)
USA	-1.871 (0.271)	-2.430 (0.442)	0.565 (0.080)
<i>Decomposition 2 (LP09)</i>			
Full Sample	-1.214 (0.082)	-1.501 (0.094)	0.553 (0.059)
International	-1.151 (0.087)	-1.435 (0.275)	0.555 (0.063)
USA	-1.988 (0.224)	-2.313 (0.386)	0.538 (0.065)

Figure 5. Distribution of Direct and Network Effects across Country-Sectors

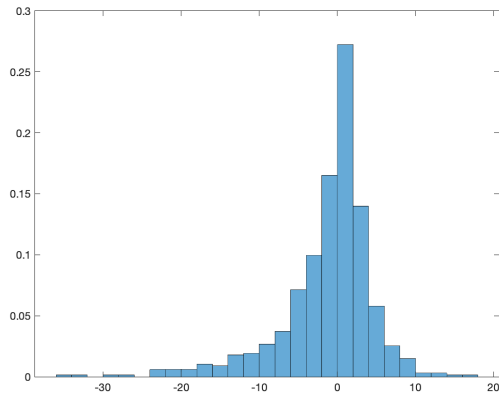
This figure plots the distribution of **Direct** and **Network** across mi from the estimation of equation Equation (13) for 2000–07, using Jarociński and Karadi (2020) monetary policy shocks for $\widehat{\mathcal{M}}_{US}$. The averages of these distributions are reported in Table 3.



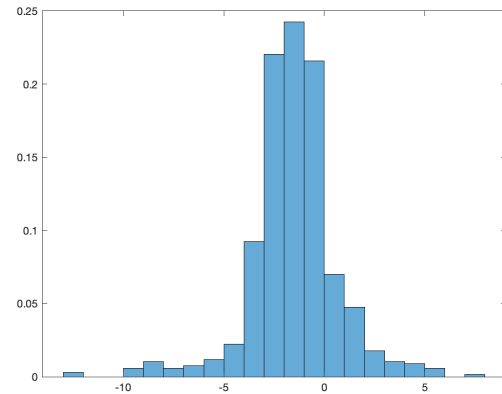
(a) Direct (AAK16)



(b) Network (AAK16)



(c) Direct (LP09)



(d) Network (LP09)

In terms of transmission via production networks, the share of the network effect for U.S. sectors is 57%,³⁹ while for foreign country-sectors it is larger, at 68%. These results are very intuitive and show that production linkages are very important in transmitting demand shocks across sectors, and, even more so, across countries. In what follows we establish robustness of these findings.

³⁹Ozdagli and Weber (2017) find a nearly identical magnitude for the network effect and a smaller magnitude for the direct effect using the same methodology (with a different measure of monetary policy shocks) in a longer sample with more disaggregated U.S. sectoral data.

5.3 Closeness to Final Consumers and Gravity Forces

We explore how the structural model presented in Internet Appendix IA1 maps into our empirical estimates. In particular, the simple theoretical framework in Internet Appendix IA1 includes a “gravity force” by incorporating iceberg trade costs. Doing so implies that the measure of the direct effect, β , is a function of two underlying parameters related to final consumption (import) decisions in a given country-sector: (i) preferences, and (ii) trade costs. Crucially, as seen in Internet Appendix equation (IA1.10), country n ’ final goods consumption of good i from country m and the estimated direct effect of the U.S. monetary policy shocks should be positively correlated with the preference parameter and negatively correlated with trade costs. While we do not have empirical estimates of preferences, we can still examine how the direct effects for country-sectors vary relative to observed final goods imports to the United States. This point holds true in a model without trade costs as well and maps nicely into the notion of “closeness to final consumers.”⁴⁰ We therefore calculate the relative difference between the share of the direct (and network) effects in two groups of country-sectors, defined as “low” and “high” total U.S. final goods consumption of a country-sector’s good – using the notation from our framework, this would correspond to $c_{nj,USA}$ – relative to the country-sector’s total output (as we do not have a clean measure of profits). This analysis is based on three cutoffs of the consumption-to-output ratio: (i) mean, (ii) median, and (iii) 90th percentile.

Table 4 presents the results using the full sample in panel A while restricting estimates to the international sample in panel B. Like our main tables, we calculate the means of the country-sector decomposition using our baseline point estimates and construct confidence intervals based on the clustered wild bootstrapping procedure (from Table 3). Comparing the “low” and “high” groups, we see that the direct share of the total effect is always significantly larger for the country-sector cells that are “closer” to the United States’ as measured by the U.S.’s final goods consumption relative to the country-sector’s output. This finding maps to the structural model, where β_{US} is increasing with respect to the steady-state ratio of the United States’ consumption of a country-sector’s goods relative to the country-sector’s profits. It is also worth noting that unlike in the closed-economy analysis of Ozdagli and Weber (2017), the network share is still larger than the direct share across both low and high groups. This is particularly noteworthy for the International sample of panel B – indeed, the opposite pattern holds when looking only at the U.S. sample of country-sectors, which we omit for brevity. This finding does not necessarily run counter to the gravity intuition. The network impact in a given foreign economy is not only picking up the role of intermediate trade linkages between the country and the U.S., but also linkages with other countries and, importantly, within the foreign economy itself. Therefore, even if the country-sector is a relatively large exporter of final consumption goods to the U.S., these other forces may still

⁴⁰See Ozdagli and Weber (2017) for another way of defining this concept.

Table 4. Comparing effects by United States’ consumption to country-sector output ratio

This table compares the direct and network shares of the total impact of U.S. monetary policy spillovers across country-sector cells by splitting the shares across two bins based on the ranking of a country-sector’s sales of final consumption goods to the U.S. relative to the country-sector’s total output. We take the average across the country-sectors’ shares in each bin based on averages within “low”/“high” groups, where the threshold for the cutoff of each bin is either the (i) mean, (ii) median, or (iii) ninetieth percentile (P90) of the consumption-to-output share observed in 2000. Panel A includes all country-sector cells, while panel B drops U.S. country-sector cells. All numbers are based on our baseline estimates and bootstrapping used to construct Table 3 of the main text.

	Panel A. Full Sample				Panel A. International Sample			
	Direct/Total		Network/Total		Direct/Total		Network/Total	
	Low	High	Low	High	Low	High	Low	High
Cutoff definition:								
Mean	0.328 (0.019)	0.412 (0.024)	0.672 (0.025)	0.588 (0.021)	0.299 (0.018)	0.465 (0.017)	0.701 (0.025)	0.535 (0.050)
Median	0.240 (0.019)	0.401 (0.020)	0.760 (0.025)	0.599 (0.025)	0.212 (0.019)	0.396 (0.019)	0.788 (0.025)	0.604 (0.026)
P90	0.308 (0.019)	0.512 (0.026)	0.692 (0.025)	0.488 (0.013)	0.309 (0.018)	0.468 (0.015)	0.692 (0.025)	0.532 (0.030)

dominate the impact of the overall transmission of a U.S. monetary policy shock.

5.4 Empirical Counterfactual Trade Regimes

We next examine what our baseline SAR estimates imply about the role of intermediate goods trade in the transmission of U.S. monetary policy shocks relative to the other trade forces at work in the model. To do this, we compute two “autarkic” decompositions using two different counterfactual intermediate goods trade (production linkages) regimes.⁴¹

The first decomposition shuts down trade in intermediate goods across all countries. As such, the \mathbf{W} matrix is now block diagonal, where we have re-normalized all domestic elements to assume that intermediate goods previously imported from a foreign country-sector, are now sourced from the corresponding domestic sector. We denote this matrix as \mathbf{W}_{AUT1} . This re-normalization ensures that a country-sector’s overall intermediate inputs-to-output ratio is the same as in the data. For the second decomposition, we assume that the intermediate trade is shut down across all countries *except* for the shipment of intermediates to the United States. Therefore, the \mathbf{W} is block diagonal, except for the entries that correspond to shipments to the United States. We again re-normalize all entries where needed such that a country-sector’s overall intermediate-to-output ratio does not

⁴¹Note that we must maintain trade in final goods in order for the SAR model to be identified in the open economy.

Table 5. Total Impact of U.S. Monetary Policy Shocks: Baseline vs. Autarkic Scenario Empirical Counterfactuals

This table presents the **Total** impact of monetary policy shocks for our baseline estimation along with two empirical autarky counterfactuals: (i) Autarky₁ assumes no intermediate input goods trade across any countries, and (ii) Autarky₂ only allows for the U.S. to source intermediate inputs from abroad. We present the mean and bootstrapped standard errors of our estimates for the full and international samples of country-sectors. All estimates are statistically significant at the one percent level.

	Total	Total _{AUT1}	Total _{AUT2}
Full Sample	-2.716 (0.435)	-1.221 (0.202)	-1.211 (0.193)
International	-2.580 (0.443)	-1.091 (0.211)	-1.109 (0.197)

differ from what we observe in the WIOD data. We denote this matrix as \mathbf{W}_{AUT2} .

Given these new synthetic input-output matrices, we then defined two new measures of the counterfactual **Total** effect of U.S. monetary policy on cross-country-sector stock returns, using the estimated ρ s and β s from our baseline estimation:

$$\mathbf{Total}_{AUT1} = (I - \text{diag}(\rho)\mathbf{W}_{AUT1})^{-1} \beta$$

$$\mathbf{Total}_{AUT2} = (I - \text{diag}(\rho)\mathbf{W}_{AUT2})^{-1} \beta$$

We then compare our baseline **Total** effect to the different counterfactual values. Comparing these differentials allow us to measure spillovers under different intermediate goods trade regime counterfactuals. We present these results in [Table 5](#). The results are quite striking, where the autarkic effects are half of the baseline value. This shows that cross-border production linkages are at least as important for the global transmission of U.S. monetary policy shocks as within-country linkages.

5.5 Robustness Checks

We conduct a number of robustness check for our main result. First, we test for sensitivity of our findings to the sample time period and to the choice of timing at which the input-output matrix is sampled. We then return to the benchmark sample period and test for sensitivity of our result to definitions of stock returns and U.S. monetary policy shocks. We test for potential effects of monetary policy shocks emanating from other countries (namely, the U.K. and the euro area). Finally, we evaluate whether any specific sectors or countries are particularly influential for our results.

Table 6. Heterogeneous Spatial Autoregression Panel Estimation: Varying Sample Period and Weighting Matrix

This table reports network shares calculated from heterogeneous coefficient spatial panel autoregressions (Equation (13)) where the dependent variable is the annualized U.S. dollar country-sector monthly stock return over time periods indicated in the first column over month with FOMC announcements, and the independent variable is the measure of the U.S. monetary policy shock taken from Jarociński and Karadi (2020). Standard errors (in parentheses) are obtained via wild bootstrap with 500 repetitions. All network shares are significant at the 1% level. Full regression results are reported in Internet Appendix Table IA4.

$$\widehat{\mathbf{q}}_t = \boldsymbol{\alpha} + (I - \text{diag}(\boldsymbol{\rho}) \mathbf{W})^{-1} \boldsymbol{\beta} \widehat{\mathcal{M}}_{US,t} + \boldsymbol{\varepsilon}_t$$

Time period	Year for \mathbf{W}	Share of network effect		
		Full sample	International	USA
2000-07	Avg. 2000-07	0.668 (0.056)	0.679 (0.060)	0.588 (0.068)
2000-16	2000	0.748 (0.056)	0.758 (0.059)	0.661 (0.034)
2000-16	Avg. 2000-16	0.765 (0.050)	0.772 (0.054)	0.707 (0.032)
2000-07,09-16	2000	0.723 (0.051)	0.734 (0.054)	0.625 (0.041)
2000-07,09-16	Avg. 2000-16	0.747 (0.052)	0.756 (0.055)	0.670 (0.043)
2000-08,10-16	2000	0.743 (0.044)	0.748 (0.046)	0.693 (0.059)
2000-08,10-16	Avg. 2000-16	0.759 (0.062)	0.762 (0.064)	0.737 (0.073)

Sensitivity to Time Period and Definition of \mathbf{W}

So far we have limited our analysis to the 2000–07 time period. Our baseline estimates are based on this period for three reasons: first, this period includes a full cycle of monetary policy actions but excludes the effective lower bound period; second, this period ends well prior to the Great Trade Collapse that occurred during the Global Financial Crisis in 2008:H2–2009:H1; third, this period does not include the dramatic decline in global stock prices that followed the collapse of Lehman Brothers. In our baseline analysis, as in our model, we take the global production network as given, and therefore we use the input-output coefficients from 2000. It is possible, however, that a rapid increase in trade globalization and the lengthening of global supply chains in the early 2000s may affect our results. Therefore, we want to explore the evolution of our results as we vary the time period and the year from which we sample the matrix \mathbf{W} .

Table 6 reports a variety of robustness checks based on different definitions of \mathbf{W} and sample

period coverage. For compactness, we just report the share of network effect across different variations of the sample for our baseline regression reported in Panel A of [Table 3](#); the full set of estimates is reported in Internet Appendix Table IA4. First, we can see that replacing \mathbf{W} measured in 2000 with the average \mathbf{W} for 2000–07 does not change the results. This is not surprising given that elements of \mathbf{W} are driven by production technologies and a trade structure that does not change very quickly, as observed in [Figure 1](#). Second, we extend our time period through 2016.⁴² We can see that the share of the network effect increases somewhat in this extended sample, not surprisingly given that increasing trend in cross-country trade integration and lengthening of global supply chains resumed following the Great Trade Collapse. However, even in this extended sample, using the average \mathbf{W} instead of \mathbf{W} for 2000 does not make much difference.

These results not only show the stability of our findings over time, but also support the assumption made in the model on the exogeneity of production linkages. At least in the studies of temporary monetary shocks, it seems to be safe to assume that technological coefficients of input-output linkages as well as trade patterns do not respond rapidly and can be taken as given.

Alternative Measures of Shocks and Returns

We perform additional tests to check the robustness of our results to alternative measures of stock returns and U.S. monetary policy shocks. As a baseline for our robustness tests we take the set of SAR results reported in Panel A of [Table 3](#). In the interest of space, we report only the share of the network effect in [Table 7](#), with the full regression results reported in Internet Appendix Table IA5.

We begin by replacing stock returns, which are measured in terms of U.S. dollars, with excess returns measured as a difference between annualized monthly USD nominal stock returns and a change in the 2-year U.S. Treasury rate during the same month, which proxies for the global risk-free rate. We also replace nominal stock returns expressed in U.S. dollars with nominal stock returns expressed in domestic currency as well as with real stock returns. To compute real stock returns, we start with domestic-currency nominal returns and adjust them with domestic inflation rate. We use last quarter’s inflation rate for each observation in our sample in order to avoid incorporating any response of inflation to U.S. monetary policy shocks into our returns data. We compute real returns as $\hat{r}\hat{q}_{mi,t} = (1 + \hat{q}_{mi,t}^{DC}) / (1 + infl_{m,t-1}) - 1$, where $\hat{r}\hat{q}_{mi,t}$ is the real stock return, $\hat{q}_{mi,t}^{DC}$ is nominal return in domestic currency, and $infl_{m,t-1}$ is the inflation rate.

The results are reported in the top three rows of [Table 7](#). We find that across all subsamples the share of the network effect increases substantially when we consider excess returns, indicating that changes in the risk-free rate contribute to the direct effect of U.S. monetary policy shocks

⁴²While WIOD is only available through 2014, we gather information on all other variables through the end of 2016. To compute average \mathbf{W} for 2000–16 we simply assume that the WIOD for 2015 and 2016 would be the same as the average 2000–14 WIOD matrix.

Table 7. Heterogeneous Spatial Autoregression Panel Estimation: Robustness to Returns and Shock Measures

This table reports the network shares calculated from heterogeneous coefficient spatial panel autoregressions (Equation (13)) where the dependent variable is the annualized U.S. dollar country-sector monthly stock return over 2000–07 over months with FOMC announcements, and the independent variable is a measure of the U.S. monetary policy shock. The first row uses the nominal USD stock returns net of the 2-year U.S. Treasury rate. The second row uses nominal domestic currency stock returns. The third row uses real equity returns. All first three rows use the ‘JK’ monetary policy shock from Jarociński and Karadi (2020). Rows three to six use USD nominal returns but use a different measure of the monetary policy shock taken from: ‘BRW’ (Bu et al., 2021), ‘OW’ (Ozdagli and Weber, 2017), and ‘NS’ (Nakamura and Steinsson, 2018). There are 44,286 total observations comprised of 671 country-sectors over 66 months. Standard errors (in parentheses) are obtained via wild bootstrap with 500 repetitions. All network shares are significant at the 1% level. Full regression results are reported in Internet Appendix Table IA5.

$$\hat{q}_t = \alpha + (I - \text{diag}(\rho) \mathbf{W})^{-1} \beta \widehat{\mathcal{M}}_{US,t} + \varepsilon_t$$

Specification	Share of network effect		
	Full sample	International	USA
Excess returns	0.799 (0.107)	0.813 (0.119)	0.693 (0.046)
Domestic currency returns	0.678 (0.060)	0.684 (0.062)	0.629 (0.074)
Real domestic currency returns	0.665 (0.084)	0.675 (0.087)	0.594 (0.082)
USD returns, OW shock	0.663 (0.050)	0.668 (0.052)	0.606 (0.103)
USD returns, NS shock	0.672 (0.060)	0.678 (0.063)	0.612 (0.074)
USD returns, BRW shock	0.609 (0.102)	0.606 (0.104)	0.655 (0.122)

to global stock returns, lowering our baseline measure of the share of the network effect. Using domestic currency returns, real or nominal, produces estimates of the network effect share that are similar to our baseline results.

Next, we consider three alternative measures of U.S. monetary policy shocks proposed by Bu et al. (2021); Nakamura and Steinsson (2018); Ozdagli and Weber (2017) (‘BRW’, ‘NS’, and ‘OW’, respectively). We find that the share of the network effect for the U.S. sectors is slightly smaller if we use ‘BRW’ shocks, but qualitatively our results are very similar to the baseline. Furthermore, the 67% network share for the U.S. stock returns using the ‘OW’ shock series is similar to the lower bound found in Ozdagli and Weber (2017), who use longer time series, a different frequency of stock returns, and a U.S. input-output table with a higher degree of sectoral disaggregation.

Placebo Analysis

The use of sector-level stock returns in the recursive SAR structure has the potential to generate spurious results. In particular, there might be a mechanical relationship between the sector-level stock returns used as the left-hand side variable and the weighted-average (based on the global input-output matrix) of sector returns used as explanatory variables. To examine whether this is indeed the case, we conduct two placebo checks where we randomly sort the return vector or the weighting matrix, while keeping key properties of the global production network fixed.

In our first approach, we reshuffle the columns of \mathbf{W} within each row, which implies that we reassign customers for a given supplier, both across countries and across industries. This permutation leaves the outdegree (or total sales) of each country-sector cell unchanged. However, this perturbation does alter the distribution of production linkages across countries and sectors. Alternatively, in the second approach, we keep the right-hand side of the estimation equation unchanged, but instead reshuffle stock returns *within* each time period. These stock returns are still subject to the same U.S. monetary policy shock as before, but their assignment to a particular country-sector is now randomly changed and they are therefore associated with a different row of the weighting matrix. We expect the first randomization to lead to a smaller share of the network effect compared to the benchmark regression, but still a positive share, because the relative role of a country-sector as a supplier to customers along the global production network is unchanged. The second randomization, however, should converge to a zero network effect because stock returns of a given country-sector are now disassociated from the country-sector's production coefficients.

We generate 500 random draws for each approach. Internet Appendix Figure IA2 reports the distribution of the average share of network effect for the perturbation of the weighting matrix \mathbf{W} in panel (a), and the perturbation of the vector of returns \mathbf{q} for each t in panel (b).⁴³ We can see that with the perturbation of \mathbf{W} , the share of the network effect is on average positive (the mean is 0.29), but substantially below the baseline value we find in the main estimation (which is 0.67). For the perturbation of stock returns within a given time period, the network share is closer to zero (the mean is 0.15), as expected.

Foreign Monetary Policy Shocks

We next control for foreign monetary policy shocks in case they occur in reaction to or in concert with the U.S. monetary policy surprises. This coincidence of monetary policy actions could lead to an upward bias in the contribution of the network effect, which would capture the effect of a foreign country's monetary policy change rather than the spillover from U.S. monetary policy. In particular, we are able to control for ECB and Bank of England (BOE) monetary policy shocks using measures constructed by [Cieslak and Schrimpf \(2019\)](#). Controlling for these shocks has implications for both

⁴³We winsorized the share of the network effect to exclude cases of large values that are due to small estimated total effect in the denominator.

Table 8. Heterogeneous Spatial Autoregression Panel Estimation: Summary Results for Foreign Monetary Policy Shocks

This table reports direct and network effects of U.S. monetary policy shocks and total effects of foreign monetary policy shocks. These are calculated from heterogeneous coefficient spatial panel autoregressions (Equation (13)) where the dependent variable is the annualized U.S. dollar country-sector monthly stock return over 2000–07 over months with FOMC announcements, and the independent variables are measures of the monetary policy shocks in the U.S. and other countries. There are 44,286 total observations comprised of 671 country-sectors over 66 months. Standard errors (in parentheses) are obtained via wild bootstrap with 500 repetitions. This table presents summary regression results. Full regression results are available upon request.

$$\widehat{\mathbf{q}}_t = \boldsymbol{\alpha} + (I - \text{diag}(\boldsymbol{\rho}) \mathbf{W})^{-1} \left(\boldsymbol{\beta} \widehat{\mathcal{M}}_{US,t} + \sum_{k=1}^K \boldsymbol{\gamma}_k \widehat{\mathcal{M}}_{kt} \right) + \boldsymbol{\varepsilon}_t$$

	Full Sample			International	United States
	(1)	(2)	(3)	(4)	(5)
Direct effect of US MP	-0.877 (0.314)	-0.889 (0.317)	-0.883 (0.291)	-0.804 (0.088)	-1.848 (0.301)
Network effect of US MP	-1.974 (0.347)	-1.897 (0.357)	-1.912 (0.328)	-1.863 (0.333)	-2.501 (0.474)
Total effect of BOE MP	-0.599 (0.274)		-0.572 (0.293)	-0.644 (0.196)	0.302 (0.408)
Total effect of ECB MP		0.014 (0.247)	-0.118 (0.243)	-0.114 (0.190)	-0.165 (0.381)

euro countries and the UK, but also for countries that have deeper production linkages with these nations than with the U.S., thus potentially impacting our baseline measure of the international network effect of U.S. monetary policy shocks along several dimensions.

In particular, we operationalize Equation (10) in a panel SAR model. We do this by extending (13) to include foreign monetary policy shocks as additional controls:

$$\widehat{\mathbf{q}}_t = \boldsymbol{\alpha} + (I - \text{diag}(\boldsymbol{\rho}) \mathbf{W})^{-1} \left(\boldsymbol{\beta} \widehat{\mathcal{M}}_{US,t} + \sum_{k=1}^K \boldsymbol{\gamma}_k \widehat{\mathcal{M}}_{kt} \right) + \boldsymbol{\varepsilon}_t, \quad (20)$$

where each $\widehat{\mathcal{M}}_{kt}$ is a measure the monetary policy shocks of country k (like the U.S. monetary policy shock term), and $\boldsymbol{\gamma}_k$ is a $NJ \times 1$ vector of coefficients. We further assume that the error term follows the same structure as in the baseline regression model (13). This specification assumes that the additional foreign monetary policy shock variables may impact stock returns both directly and indirectly via the global input-output matrix.

Table 8 presents these regression results, where we report total effects of foreign monetary policy shocks alongside the decomposition of U.S. monetary policy shocks. Looking at the direct and network effects of U.S. monetary policy in the first two rows, we see that our main results on the importance of the international network effect of U.S. monetary policy remain unchanged. In particular, when including all foreign monetary policy shocks the network is share in columns

(3)-(5) is 0.684, 0.699, 0.575, for the full, foreign, and U.S. country-sectors respectively. Meanwhile, BOE monetary surprises have a significant effect on global stock prices, outside of the U.S., but the magnitude of this effect is about six times smaller than those of the U.S. monetary policy shocks. ECB monetary surprises do not appear to have an impact on global stock prices – the point estimates are small in magnitude and are not statistically significant.⁴⁴ This result is consistent with the literature, but is at odds with our simplified theoretical framework, which does not account for the special role the US plays as the world’s supplier of the reserve currency and dollar-denominated assets, above and beyond what the global production network can capture.

Heterogeneity of Estimates

Before proceeding to analyze potential determinants of the heterogeneity of our estimates, we demonstrate that our results are not driven by the outliers. [Figure 6](#) plots the average network effect against the average direct effect, where panel (a) computes the average across sectors within countries, and panel (b) computes averages across countries within sectors.

In panel (a), blue labels indicate advanced economies, green labels indicate emerging economies, and a red label is used for the U.S. We can see that the largest average direct and network effects are observed for Turkey, although the distance from the rest of the countries is not so large as to cause concern about undue influence of just one country on overall results. For the rest of the countries, we do not observe substantial differences between advanced and emerging economies. With the exception of Italy and Russia, we see a strong positive correlation between direct and network effects across countries. Finally, the U.S. does not stand out of the pack, with both direct and network effects tending to be larger than the average country-sector’s, but within the distribution across other countries.

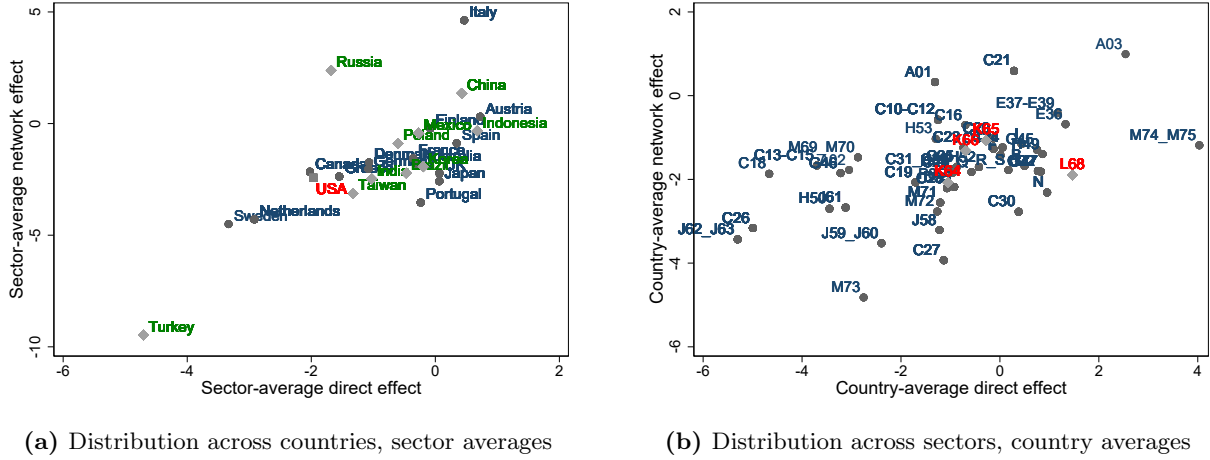
In panel (b) red labels indicate sectors that are related to finance and real estate and blue labels indicate all other sectors. We can see that there is a positive correlation between network and direct effects across sectors as well, but it is not as strong as across countries. There are no sectors that appear to be outliers.

We next explore potential drivers of the observed heterogeneity in the estimated total effects and network shares across countries and sectors. Different variables are constructed at the country

⁴⁴This result persists if we extend our sample through 2016 and is consistent with the literature. For example, [Rogers et al. \(2014\)](#) study the Fed, BOE, ECB, and BOJ monetary policy shocks during and after the 2008-09 crisis. They find that the effect of ECB shocks on stock markets is almost never significant and is much smaller than the effect of other central banks’ shocks, even in a narrow intra-day window. Focusing on unconventional policies post-crisis, they find, more generally, that “the effects of US monetary policy shocks on non-US yields are larger than the other way round.” For the pre-crisis period (2000-2008), [Hussain \(2011\)](#) finds also in intra-day analysis that the effect of ECB shocks on French, German, UK, and Swiss stock index returns are substantially smaller than the effect of BOE shocks. For the UK index (FTSE100), in particular, the effect is nearly zero and not statistically significant. Similarly, [Bredin et al. \(2009\)](#) find the effect of the ECB monetary policy shocks on German and U.K. stock markets is insignificant.

Figure 6. Distribution of Direct and Network Effects across Countries and Sectors

This figure plots averages of **Direct** and **Network** across i , plotted for each m and averages across m plotted for each i from the estimation of Equation (13) for 2000–07, using Jarociński and Karadi (2020) U.S. monetary policy shocks for $\widehat{\mathcal{M}}_{US}$, using Decomposition 1 (AAK16). The overall averages of these distributions are reported in Table 3. In panel (a), blue labels are for advanced economies, green labels are for emerging economies, and the red label is for the USA. In panel (b), financial and real estate industries are labeled in red.



and sector levels that may be associated with the degree to which U.S. monetary policy shocks spillovers across countries and/or sectors. We focus on variables commonly used in the literature as well as those that may correlate with differences in production linkages, in order to rule out potential omitted variable bias in our estimates of the network share. Internet Appendix Table IA7 presents the definitions and sources of the variables we use in the regressions.

Two approaches are exploited to address heterogeneity. First, to estimate whether these variables can help explain the cross-section distribution of the total effect of U.S. monetary policy shocks on stock returns, we interact the explanatory variable with the monetary policy shock measure in our OLS panel analysis. We conduct this analysis with and without time fixed effects. Second, we regress shares of the network effect in the total effect for each country-sector cell estimated from our benchmark SAR specification on the explanatory variables (as of year 2000) in cross-section regressions.

We present and discuss all regression results in Internet Appendix IA3. Specifically, the sets of variables we include in the regressions are: (1) country size, (2) external debt, (3) measures of financial frictions, (4) financial openness, (5) price stickiness, or (6) currency of trade invoicing. The regressions generally deliver coefficient estimates for country or sector characteristics with expected signs, but none of them are statistically significant.

5.6 The Global Financial Cycle

We next explore the robustness of the global production network demand channel of U.S. monetary policy shocks by controlling for global financial cycle variables, which if omitted may lead to estimation biases of our baseline direct and network effects. In particular, if these omitted shocks are correlated with U.S. monetary policy shocks and have a direct effect on global stock returns, our estimates of the impact of U.S. monetary policy shocks would spuriously attribute some of their effect to propagation through the production network. In terms of estimation, this would be reflected in the spacial autoregression coefficients vector ρ being upwardly biased (in absolute value).

There is clear evidence in the literature that global stock prices respond to a global financial cycle (Chen, 2018; Bruno and Shin, 2015b; Miranda-Agrippino and Rey, 2020). Some movements of the global financial cycle are due to changes in U.S. monetary policy, while others are market driven. Here we show the robustness of our results to controlling for such shocks. In our analysis we focus on three variables that are not highly correlated with each other and are easily available: changes in the VIX, the 2-year U.S. Treasury rate, and the broad U.S. dollar Index. We conduct both least squares and SAR analysis and include these variables one at a time and then all together.

Linear Regression Results

Table 9 shows the results of the fixed effects least-square regressions for the full sample as well as for subsamples of foreign country-sectors and for the U.S. only. In the interest of space, for the subsamples we only present the results with all three additional control variables included – the results do not vary much if we include them individually.⁴⁵

The VIX has been shown to be highly correlated with the global financial cycle and is therefore likely to affect global stock returns given changes in risk aversion and the behavior of financial intermediaries. To the extent that some movements in the VIX are correlated with U.S. monetary policy shocks, our baseline regressions may be attributing some of the effect of the VIX to the demand-channel effect of the U.S. monetary policy shock that the input-output network captures. However, when we include the VIX in the regression, we find that the impact of the U.S. monetary policy shock is not statistically different from the baseline for the full sample as well as the subsamples. Consistent with the literature, increases in the VIX lower stock market returns worldwide, by about the same amount in the U.S. and in foreign countries.

Monetary policy can affect stock returns through surprises but it may also have an effect through the level of interest rates, which would not be necessarily reflected in monetary policy shocks. This second effect is likely to be reflected in capital flows (Avdjiev and Hale, 2019). According to the

⁴⁵The full set of regressions is available upon request.

Table 9. Least-Squares Panel Estimation: Controlling for Global Financial Cycle Covariates

This table reports coefficients from linear regressions where the dependent variable \hat{q} is the country-sector annualized U.S. dollar monthly stock return over 2000–07 in month with FOMC announcements. The independent variables include the measure of the U.S. monetary policy shock taken from [Jarociński and Karadi \(2020\)](#) (MP shock), the monthly changes in the VIX index (VIX); the 2-year U.S. Treasury rate (T2y), and the broad U.S. dollar index (USD). Robust clustered standard errors are in parentheses. All coefficients on MP shock are statistically significant at the 1% confidence levels.

$$\hat{q}_{mi,t} = \alpha_{mi} + \beta_{MP}^{LS} \widehat{\mathcal{M}}_{US,t} + \mathbf{X}_t \beta_X^{LS} + \varepsilon_{mi,t}$$

	Full Sample				International	United States
	(1)	(2)	(3)	(4)	(5)	(6)
MP shock	-3.320 (0.888)	-3.514 (0.875)	-3.184 (0.903)	-3.465 (0.848)	-3.339 (0.872)	-4.472 (0.710)
$\Delta \ln \text{VIX}$	-0.018 (0.003)			-0.016 (0.004)	-0.016 (0.004)	-0.013 (0.003)
ΔT2y		0.551 (0.383)		0.209 (0.363)	0.220 (0.380)	0.061 (0.305)
$\Delta \ln \text{USD}$			-0.476 (0.574)	-0.438 (0.542)	-0.443 (0.560)	-0.357 (0.448)
R^2	0.075	0.069	0.067	0.076	0.074	0.08
Observations		49,667			46,357	3,310
Cty-sec FE	Yes	Yes	Yes	Yes	Yes	Yes

authors, an increase in the policy rate during the lending boom is likely to increase capital flows worldwide, which would imply increases in stock returns globally. Indeed, we find that an increase in the 2-year U.S. Treasury rate increases stock returns during our sample period of 2000–07 as seen in columns (2) and (4)-(6), which corresponds to a lending boom, however, the effect is not statistically significant. Controlling for the 2-year U.S. Treasury rate does not change much the impact of the U.S. monetary policy shock relative to the baseline.

In our baseline analysis we incorporated the effect of exchange rates into stock returns by expressing them in U.S. dollars. Given that the value of the dollar can be affected by U.S. monetary policy shocks ([Inoue and Rossi, 2019](#)), we want to separate the impact of U.S. monetary policy surprises that is orthogonal to exchange rate changes from the reaction to the change in the value of the dollar. To do so, we control for the broad U.S. dollar index in columns (3)-(6). We find that the value of the dollar does not have a statistically significant effect on global stock returns and that controlling for the dollar index does not change our baseline results.⁴⁶ This is not surprising

⁴⁶The results are very similar if we instead control for each country’s bilateral exchange rate vis-à-vis the U.S. dollar.

given our previous robustness tests in which we found the results to be very similar whether we use USD-based or domestic currency-based stock returns.

Combining the three additional control variables produces results that are similar to the regression with the VIX only, showing, consistent with the literature, that the VIX is the dominant correlate of the global financial cycle when it comes to explaining movements in global stock returns.

Heterogeneous SAR Results

In order to condition on the global financial cycle in SAR setting, we conduct a two-step procedure. The two-step procedure allows for isolating the effect of global financial cycle covariates without imposing transmission of these shocks through production network. In the first step, we regress annualized monthly stock returns expressed in U.S. dollars on annualized monthly log changes in the VIX and the broad U.S. dollar index (USD), and the change in the 2-year U.S. Treasury rate (T2y):

$$\hat{\mathbf{q}}_t = \boldsymbol{\alpha} + \gamma_1 \Delta \ln \text{VIX}_t + \gamma_2 \Delta \ln \text{USD}_t + \gamma_3 \Delta \text{T2y}_t + \boldsymbol{\varepsilon}_t. \quad (21)$$

The estimates for this regression using OLS, random coefficients, or Mean Group estimator (Pesaran and Smith, 1995) are reported in Panel B of Table 10. For consistency with the rest of our analysis, we allow for the effects of global financial cycle covariates to vary by country and sector, thus, as a benchmark, we estimate regression Equation (21) using Mean Group estimator (Pesaran and Smith, 1995), which allows us to estimate a separate coefficient for each country-sector cell.⁴⁷

Residuals from this regression represent the component of stock returns that is orthogonal to global financial cycle covariates:

$$\hat{\mathbf{q}}_{\perp \mathbf{X},t} = \hat{\mathbf{q}}_t - \mathbf{a} - \mathbf{c}_1 \Delta \ln \text{VIX}_t - \mathbf{c}_2 \Delta \ln \text{USD}_t - \mathbf{c}_3 \Delta \text{T2y}_t, \quad (22)$$

where \mathbf{a} is the estimate for $\boldsymbol{\alpha}$ and \mathbf{c}_1 - \mathbf{c}_3 are estimates for γ_1 - γ_3 .

We then use the component of stock returns that is orthogonal to global financial cycle covariates as our dependent variable in the SAR analysis as follows:

$$\hat{\mathbf{q}}_{\perp \mathbf{X},t} = \boldsymbol{\alpha} + (I - \text{diag}(\boldsymbol{\rho}) \mathbf{W})^{-1} \boldsymbol{\beta} \widehat{\mathcal{M}}_{US,t} + \boldsymbol{\varepsilon}_t. \quad (23)$$

The results are reported in Table 10.

Relative to our benchmark results in Table 3, *Decomposition 1 (AAK16)*, we find that both the direct and network effects are now slightly larger for foreign stock returns and slightly smaller for the U.S. stock returns. The share of the network effect is unchanged for the U.S. stock returns, but is slightly lower for foreign stock returns. This finding is consistent with our concern that some of the global financial cycle effect was reflected in the network effect in our benchmark specification.

⁴⁷The results are nearly identical if we use instead OLS or random coefficient estimators. These results are available upon request.

Table 10. Heterogeneous Spatial Autoregression Panel Estimation: Conditioning on the Global Financial Cycle

This table reports direct and network effects from heterogeneous coefficient spatial panel autoregression (Equation (23)) where the dependent variable is the annualized U.S. dollar country-sector monthly stock return over 2000–07 over months with FOMC announcements, after conditioning for the changes in VIX, 2-year U.S. Treasury rate, and U.S. Broad dollar index. Conditioning is based on the mean-group estimator with first stage reported in Panel B. Independent variable is the measure of the U.S. monetary policy shock taken from Jarociński and Karadi (2020). There are 44,286 observations total comprised of 671 country-sectors over 66 months. Standard errors (in parentheses) are obtained via wild bootstrap with 500 repetitions. All coefficients are statistically significant at the 1% confidence level.

Panel A. Second-stage regression					
$\widehat{q}_{\perp \mathbf{X},t} = \boldsymbol{\alpha} + (I - \text{diag}(\boldsymbol{\rho}) \mathbf{W})^{-1} \boldsymbol{\beta} \widehat{\mathcal{M}}_{US,t} + \boldsymbol{\varepsilon}_t$					
	Avg. β	Avg. ρ	Avg. Direct	Avg. Network	Network/Total
Full sample	-1.001 (0.106)	0.589 (0.035)	-1.001 (0.269)	-1.880 (0.310)	0.653 (0.063)
International	-0.936 (0.108)	0.589 (0.035)	-0.936 (0.108)	-1.848 (0.315)	0.664 (0.066)
United States	-1.796 (0.304)	0.581 (0.055)	-1.796 (0.304)	-2.274 (0.428)	0.559 (0.092)

Panel B. First-stage regression			
$\widehat{q}_t = \boldsymbol{\alpha} + \gamma_1 \Delta \ln \text{VIX}_t + \gamma_2 \Delta \ln \text{USD}_t + \gamma_3 \Delta \text{T2y}_t + \boldsymbol{\varepsilon}_t$			
	OLS (1)	RC (2)	MG (3)
$\Delta \ln \text{VIX}$	-0.057 (0.019)	-0.052 (0.004)	-0.057 (0.003)
ΔT2y	0.037 (0.395)	0.065 (0.079)	0.035 (0.064)
$\Delta \ln \text{USD}$	-2.404 (0.599)	-2.376 (0.142)	-2.389 (0.116)
Constant	1.087 (0.078)	0.983 (0.030)	1.105 (0.028)
Observations	49,667	49,641	49,641
Adjusted R^2	0.023		
Wald χ^2		542.03	881.78

The difference between the network share in the benchmark results and in the results in Table 10 is negligible in magnitude and is not statistically significant. Combined with the findings from our

least-square analysis that the total effect of U.S. monetary policy shock is robust to controlling for global financial cycle covariates, this SAR results confirm that any bias arising from not controlling for global financial cycle in our benchmark specification is minor.

6 Conclusion

In this paper we quantitatively evaluate the role of the global production network in the propagation of U.S. monetary policy shocks to stock returns at a sector level worldwide. Basing our analysis on a simple conceptual framework, which can be derived from a canonical multi-country multi-sector production network model, we estimate a spatial autoregression in a panel setting that allows for coefficients to vary across countries and sectors. The conceptual framework predicts that country-sectors which are more closely linked to the U.S. via supply linkages will be more affected by U.S. monetary policy shocks.

We find a very robust and quantitatively important role of the production network – nearly 70% of the total estimated impact of U.S. monetary policy shocks on global stock returns is due to production linkages. This finding is not affected by conditioning on the financial channel of U.S. monetary policy shock transmission studied in the global financial cycle literature. Thus, in addition to providing a quantitative evidence of the importance of the global production network in transmitting asset market shocks, we contribute to the growing literature on the spillovers of the U.S. monetary policy internationally by documenting and quantifying the role of real linkages in the global transmission of such shocks.

References

- Acemoglu, Daron, Ufuk Akcigit, and William Kerr, “Networks and the Macroeconomy: An Empirical Exploration,” *NBER Macroeconomics Annual 2015*, 2016, 30, 276–335.
- , Vasco M. Carvalho, Asuman Ozdaglar, and Alireza Tahbaz-Salehi, “The Network Origins of Aggregate Fluctuations,” *Econometrica*, September 2012, 80 (5), 1977–2016.
- Alfaro, Laura, Manuel García-Santana, and Enrique Moral-Benito, “On the Direct and Indirect Real Effects of Credit Supply Shocks,” January 2020. Forthcoming, *Journal of Financial Economics*.
- Amihud, Yakov, Allaudeen Hameed, Wenjin Kang, and Huiping Zhang, “The illiquidity premium: International evidence,” *Journal of Financial Economics*, 2015, 117 (2), 350–368.
- Ammer, John, Clara Vega, and Jon Wongswan, “International Transmission of U.S. Monetary Policy Shocks: Evidence from Stock Prices,” *Journal of Money, Credit and Banking*, 2010, 42 (s1), 179–198.
- Aquaro, Michele, Natalia Bailey, and M. Hashem Pesaran, “Estimation and Inference for Spatial Models with Heterogeneous Coefficients: An Application to U.S. House Prices,” *Journal of Applied Econometrics*, 2021, 36 (1), 18–44.
- Atalay, Enghin, “How Important Are Sectoral Shocks?,” *American Economic Journal: Macroeconomics*, October 2017, 9 (4), 254–280.
- Auer, Raphael A., Andrei A. Levchenko, and Philip Sauré, “International Inflation Spillovers through Input Linkages,” *Review of Economics and Statistics*, July 2019, 101 (3), 507–521.
- Avdjiev, Stefan and Galina Hale, “U.S. monetary policy and fluctuations of international bank lending,” *Journal of International Money and Finance*, 2019, 95, 251 – 268.
- Baqae, David Rezza and Emmanuel Farhi, “The Macroeconomic Impact of Microeconomic Shocks: Beyond Hulten’s Theorem,” *Econometrica*, July 2019, 87 (4), 1155–1203.
- and —, “Networks, Barriers, and Trade,” August 2019. mimeo, UCLA and Harvard.
- Barrot, Jean-Noël, Erik Loualiche, and Julien Sauvagnat, “The Globalization Risk Premium,” *Journal of Finance*, October 2019, 74 (5), 2391–2439.
- Bekaert, Geert, Robert J. Hodrick, and Xiaoyan Zhang, “International Stock Return Comovements,” *The Journal of Finance*, 2009, 64 (6), 2591–2626.
- Bems, Rudolfs, Robert C Johnson, and Kei-Mu Yi, “Demand Spillovers and the Collapse of Trade in the Global Recession,” *IMF Economic Review*, December 2010, 58 (2), 295–326.
- Bernanke, Ben S. and Kenneth N. Kuttber, “What Explains the Stock Market’s Reaction to Federal Reserve Policy?,” *The Journal of Finance*, 2005, 60 (3), 1221–1257.
- Bigio, Saki and Jennifer La’O, “Distortions in Production Networks,” *Quarterly Journal of Economics*, August 2020, 135 (4), 2187–2253.
- Boehm, Christoph E., Aaron Flaaen, and Nitya Pandalai-Nayar, “Input Linkages and the Transmission of Shocks: Firm-Level Evidence from the 2011 Tōhoku Earthquake,” *The Review of Economics and Statistics*, 2019, 101 (1), 60–75.
- Bräuning, Falk and Viacheslav Sheremirov, “Output Spillovers from U.S. Monetary Policy: The Role of International Trade and Financial Linkages,” October 2019. Federal Reserve Bank of Boston Working Paper No. 19–15.
- Bredin, Don, Stuart Hyde, Dirk Nitzsche, and Gerard O’Reilly, “European monetary policy surprises: the aggregate and sectoral stock market response,” *International Journal of Finance & Economics*, 2009, 14 (2), 156–171.

- Brooks, Robin and Marco Del Negro, “Firm-Level Evidence on International Stock Market Comovement,” *Review of Finance*, January 2006, 10 (1), 69–98.
- Bruno, Valentina and Huyn Song Shin, “Capital Flows and the Risk-Taking Channel of Monetary Policy,” *Journal of Monetary Economics*, 2015, 71, 119–132.
- and —, “Cross-Border Banking and Global Liquidity,” *Review of Economic Studies*, 2015, 82, 525–564.
- Bu, Chunya, John Rogers, and Wenbin Wu, “A unified measure of Fed monetary policy shocks,” *Journal of Monetary Economics*, 2021, 118, 331–349.
- Buch, Claudia M., Matthieu Bussière, Linda Goldberg, and Robert Hills, “The international transmission of monetary policy,” *Journal of International Money and Finance*, 2019, 91, 29 – 48.
- Burstein, Ariel, Christopher Kurz, and Linda L. Tesar, “Trade, Production Sharing, and the International Transmission of Business Cycles,” *Journal of Monetary Economics*, 2008, 55, 775–795.
- Carvalho, Vasco M., “From Micro to Macro via Production Networks,” *Journal of Economic Perspectives*, Fall 2014, 28 (4), 23–48.
- , Makoto Nirei, Yukiko U. Saito, and Alireza Tahbaz-Salehi, “Supply Chain Disruptions: Evidence from the Great East Japan Earthquake’,” 2021. Forthcoming, *Quarterly Journal of Economics*.
- Cetorelli, Nicola and Linda S. Goldberg, “Banking Globalization and Monetary Transmission,” *The Journal of Finance*, 2012, 67 (5), 1811–1843.
- Chang, Jinfan, Huancheng Du, Dong Lou, and Christopher Polk, “Ripples into Waves: Trade Networks, Economic Activity, and Asset Prices,” July 2020. Mimeo, Chinese University of Hong Kong, Princeton, and LSE.
- Chava, Sudheer and Alex Hsu, “Financial Constraints, Monetary Policy Shocks, and the Cross-Section of Equity Returns,” *The Review of Financial Studies*, 11 2019, 33 (9), 4367–4402.
- Chen, Peng, “Understanding international stock market comovements: A comparison of developed and emerging markets,” *International Review of Economics & Finance*, 2018, 56, 451–464.
- Cieslak, Anna, Adair Morse, and Annette Vissing-Jorgensen, “Stock Returns over the FOMC Cycle,” *The Journal of Finance*, 2019, 74 (5), 2201–2248.
- and Andreas Schrimpf, “Non-monetary News and Central Bank Communication,” *Journal of International Economics*, 2019, (118), 293–315.
- Claessens, Stijn, “Global Banking: Recent Developments and Insights from Research,” *Review of Finance*, 09 2017, 21 (4), 1513–1555.
- Davidson, Russell and Emmanuel Flachaire, “The wild bootstrap, tamed at last,” *Journal of Econometrics*, 2008, 146 (1), 162–169.
- di Giovanni, Julian, Andrei A. Levchenko, and Isabelle Mejean, “The Micro Origins of International Business Cycle Comovement,” *American Economic Review*, January 2018, 108 (1), 82–108.
- Dutt, Pushan and Ilian Mihov, “Stock Market Comovements and Industrial Structure,” *Journal of Money, Credit and Banking*, 2013, 45 (5), 891–911.
- Eaton, Jonathan, Samuel Kortum, Brent Neiman, and John Romalis, “Trade and the Global Recession,” *American Economic Review*, November 2016, 106 (11), 3401–38.
- Ehrmann, Michael and Marcel Fratzscher, “Taking Stock: Monetary Policy Transmission to Equity Markets,” *Journal of Money, Credit and Banking*, 2004, 36 (4), 719–737.

- and —, “Global Financial Transmission of Monetary Policy Shocks,” *Oxford Bulletin of Economics and Statistics*, 2009, 71 (6), 739–759.
- Elhorst, J. Paul, “MATLAB Software for Spatial Panels,” *International Regional Science Review*, 2014, 37 (3), 389–405.
- Fama, Eugene F. and Kenneth R. French, “Size, value, and momentum in international stock returns,” *Journal of Financial Economics*, 2012, 105 (3), 457–472.
- Foerster, Andrew T., Pierre-Daniel G. Sarte, and Mark W. Watson, “Sectoral vs. Aggregate Shocks: A Structural Factor Analysis of Industrial Production,” *Journal of Political Economy*, February 2011, 119 (1), 1–38.
- Forbes, Kristin J. and Francis E. Warnock, “Capital Flow Waves: Surges, Stops, Flight, and Retrenchment,” *Journal of International Economics*, 2012, 88 (2), 235 – 251. NBER Global.
- Gali, Jordi, *Monetary Policy, Inflation, and the Business Cycle: An Introduction to the New Keynesian Framework and Its Applications*, 2 ed., Princeton: Princeton University Press, 2015.
- Gertler, Mark and Peter Karadi, “Monetary Policy Surprises, Credit Costs, and Economic Activity,” *American Economic Journal: Macroeconomics*, 2015, 7 (1), 44–76.
- Gorodnichenko, Yuriy and Michael Weber, “Are Sticky Prices Costly? Evidence from the Stock Market,” *American Economic Review*, January 2016, 106 (1), 165–99.
- Grassi, Basile, “IO in I-O: Size, Industrial Organization, and the Input-Output Network Make a Firm Structurally Important,” December 2017. mimeo, Bocconi.
- Griffin, J. M. and R. M. Stulz, “International Competition And Exchange Rate Shocks: A Cross-Country Industry Analysis Of Stock Returns,” *Review of Financial Studies*, 2001, 14 (1), 215–241.
- Griffin, John M., Xiuqing Ji, and J. Spencer Martin, “Momentum Investing and Business Cycle Risk: Evidence from Pole to Pole,” *The Journal of Finance*, 2003, 58 (6), 2515–2547.
- Herskovic, Bernard, “Networks in Production: Asset Pricing Implications,” *Journal of Finance*, 2018, 73 (4), 1785–1818.
- Huo, Zhen, Andrei A Levchenko, and Nitya Pandalai-Nayar, “International Comovement in the Global Production Network,” February 2020. NBER Working Paper 25978.
- Hussain, Syed Mujahid, “Simultaneous monetary policy announcements and international stock markets response: An intraday analysis,” *Journal of Banking & Finance*, 2011, 35 (3), 752–764.
- Inoue, Atsushi and Barbara Rossi, “The effects of conventional and unconventional monetary policy on exchange rates,” *Journal of International Economics*, 2019, 118, 419 – 447.
- Jach, Agnieszka, “International stock market comovement in time and scale outlined with a thick pen,” *Journal of Empirical Finance*, 2017, 43, 115–129.
- Jarociński, Marek and Peter Karadi, “Deconstructing Monetary Policy Surprises – The Role of Information Shocks,” *American Economic Journal: Macroeconomics*, April 2020, 12 (2), 1–43.
- Johnson, Robert C., “Trade in Intermediate Inputs and Business Cycle Comovement,” *American Economic Journal: Macroeconomics*, October 2014, 6 (4), 39–83.
- and Guillermo Noguera, “A Portrait of Trade in Value-Added over Four Decades,” *The Review of Economics and Statistics*, 2017, 99 (5), 896–911.
- Karolyi, George A. and Ying Wu, “Is Currency Risk Priced in Global Equity Markets,” *Review of Finance*, 10 2020. rfaa026.
- La’O, Jennifer and Alireza Tahbaz-Salehi, “Optimal Monetary Policy in Production Networks,” July 2020. NBER Working Paper 27464.

- LeSage, James and Robert Kelley Pace, *Introduction to Spatial Econometrics*, 1 ed., New York, NY: CRC Press, January 2009.
- Lewis, Karen K., “Global Asset Pricing,” *Annual Review of Financial Economics*, 2011, 3 (1), 435–466.
- Lucca, David O. and Emanuel Moench, “The Pre-FOMC Announcement Drift,” *The Journal of Finance*, 2015, 70 (1), 329–371.
- Mammen, Enno, “Bootstrap and Wild Bootstrap for High Dimensional Linear Models,” *Annals of Statistics*, 03 1993, 21 (1), 255–285.
- Miranda-Agrippino, Silvia and H el ene Rey, “U.S. Monetary Policy and the Global Financial Cycle,” May 2020. Forthcoming, *Review of Economic Studies*.
- Nakamura, Emi and J on Steinsson, “High-Frequency Identification of Monetary Non-Neutrality: The Information Effect,” *The Quarterly Journal of Economics*, 01 2018, 133 (3), 1283–1330.
- Ozdagli, Ali and Michael Weber, “Monetary Policy through Production Networks: Evidence from the Stock Market,” 2017. NBER Working Paper No. 23424.
- and Mihail Velikov, “Show me the money: The monetary policy risk premium,” *Journal of Financial Economics*, 2020, 135 (2), 320 – 339.
- Pasten, Ernesto, Raphael Schoenle, and Michael Weber, “The Propagation of Monetary Policy Shocks in a Heterogeneous Production Economy,” 2017. Forthcoming, *Journal of Monetary Economics*.
- Pesaran, M.Hashem and Ron Smith, “Estimating long-run relationships from dynamic heterogeneous panels,” *Journal of Econometrics*, 1995, 68 (1), 79 – 113.
- Rey, H el ene, “Dilemma not Trilemma: The Global Financial Cycle and Monetary Policy Independence,” 2013. Jackson Hole Conference Proceedings, Federal Reserve Bank of Kansas City.
- Richmond, Robert J., “Trade Network Centrality and Currency Risk Premia,” *Journal of Finance*, 2019, 74 (3), 1315–1361.
- Rogers, John H., Chiara Scotti, and Jonathan H. Wright, “Evaluating asset-market effects of unconventional monetary policy: a multi-country review,” *Economic Policy*, 11 2014, 29 (80), 749–799.
- Rubbo, Elisa, “Networks, Phillips Curves, and Monetary Policy,” June 2020. Mimeo, Harvard University.
- Timmer, Marcel P., Erik Dietzenbacher, Bart Los, Robert Stehrer, and Gaaitzen J. de Vries, “An Illustrated User Guide to the World Input–Output Database: the Case of Global Automotive Production,” *Review of International Economics*, August 2015, 23 (3), 575–605.
- Wei, Shang-Jin and Yinxie Xie, “Monetary Policy in an Era of Global Supply Chains,” *Journal of International Economics*, 2020, 124, 103299. NBER International Seminar on Macroeconomics 2019.
- Wongswan, Jon, “Transmission of Information across International Equity Markets,” *The Review of Financial Studies*, 2006, 19 (4), 1157–1189.
- Woodford, Michael, *Interest and Prices: Foundations of a Theory of Monetary Policy*, 1 ed., Princeton: Princeton University Press, 2004.
- Wu, Jing Cynthia and Fan Dora Xia, “Measuring the Macroeconomic Impact of Monetary Policy at the Zero Lower Bound,” *Journal of Money, Credit, and Banking*, March-April 2016, 48 (2-3), 253–91.

Table A1. Monthly Country Stock Return Coverage for Months with Monetary Surprise Shocks

This table presents information on the number of sectors and observation of monthly sector returns per country for dates where there are monetary surprise shocks (FOMC meetings or off-cycle meetings) over 2000–16. The data are constructed by merging stock returns data from TREI with the WIOD classification of sectors.

Country	No. Industries	Observations
Australia	38	5,893
Austria	15	2,477
Brazil	17	3,781
Canada	38	5,803
China	47	6,735
Germany	28	4,841
Denmark	17	2,525
Spain	24	3,783
Finland	22	3,410
France	38	5,542
United Kingdom	40	5,954
Greece	10	1,943
Indonesia	18	3,220
India	40	5,690
Italy	22	4,370
Japan	45	6,706
Korea	34	6,108
Mexico	14	2,401
Netherlands	20	2,895
Poland	17	3,266
Portugal	8	1,209
Russia	5	1,419
Sweden	29	4,584
Turkey	21	3,887
Taiwan	29	4,675
United States	50	6,982

Table A2. Monthly Sector Stock Return Coverage for Months with Monetary Surprise Shocks

This table presents information on the number of sectors and observation of monthly sector returns per sector for dates where there are monetary surprise shocks (FOMC meetings or off-cycle meetings) over 2000–16. The data are constructed by merging stock returns data from TREI with the WIOD classification of sectors.

Industry	WIOD code	No. countries	Observations
Crop and animal production, hunting and related service activities	A01	13	1,614
Forestry and logging	A02	3	348
Fishing and aquaculture	A03	6	626
Mining and quarrying	B	19	2,593
Manufacture of food products, beverages and tobacco products	C10-C12	23	3,174
Manufacture of textiles, wearing apparel and leather products	C13-C15	16	2,167
Manufacture of wood and of products of wood and cork, etc	C16	10	1,196
Manufacture of paper and paper products	C17	19	2,504
Printing and reproduction of recorded media	C18	8	1,034
Manufacture of coke and refined petroleum products	C19	20	2,623
Manufacture of chemicals and chemical products	C20	25	3,251
Manufacture of basic pharmaceutical products and pharmaceutical preparations	C21	20	2,513
Manufacture of rubber and plastic products	C22	18	2,370
Manufacture of other non-metallic mineral products	C23	18	2,488
Manufacture of basic metals	C24	24	3,129
Manufacture of fabricated metal products, except machinery and equipment	C25	14	1,724
Manufacture of computer, electronic and optical products	C26	22	3,036
Manufacture of electrical equipment	C27	16	2,044
Manufacture of machinery and equipment n.e.c.	C28	19	2,519
Manufacture of motor vehicles, trailers and semi-trailers	C29	20	2,708
Manufacture of other transport equipment	C30	17	2,181
Manufacture of furniture; other manufacturing	C31-C32	17	2,219
Repair and installation of machinery and equipment	C33	1	84
Electricity, gas, steam and air conditioning supply	D35	22	2,874
Water collection, treatment and supply	E36	6	740
Sewerage; waste collection, treatment and disposal activities; etc	E37-E39	9	1,111
Construction	F	26	3,526
Wholesale and retail trade and repair of motor vehicles and motorcycles	G45	12	1,522
Wholesale trade, except of motor vehicles and motorcycles	G46	19	2,537
Retail trade, except of motor vehicles and motorcycles	G47	24	3,136
Land transport and transport via pipelines	H49	17	1,957
Water transport	H50	9	1,138
Air transport	H51	19	2,318
Warehousing and support activities for transportation	H52	19	2,245
Postal and courier activities	H53	8	796
Accommodation and food service activities	I	19	2,483
Publishing activities	J58	18	2,358
Motion picture, video and television programme production, etc	J59-J60	16	2,104
Telecommunications	J61	26	3,563
Computer programming, consultancy and related activities; info; etc	J62-J63	21	2,794
Financial service activities, except insurance and pension funding	K64	26	3,508
Insurance, reinsurance and pension funding, except compulsory social security	K65	21	2,613
Activities auxiliary to financial services and insurance activities	K66	22	2,491
Real estate activities	L68	23	2,930
Legal and accounting activities; activities of head offices; etc	M69-M70	10	1,036
Architectural and engineering activities; technical testing and analysis	M71	16	2,004
Scientific research and development	M72	13	1,575
Advertising and market research	M73	10	1,182
Other professional, scientific and technical activities; veterinary activities	M74-M75	7	848
Administrative and support service activities	N	18	2,248
Education	P85	7	831
Human health and social work activities	Q	13	1,445
Other service activities	R-S	17	2,037